

# Tau Kappa Epsilon Fraternity



## Delta Nu Chapter

Northwest Missouri  
State University  
222 W. Cooper  
Maryville, Missouri 64468

# W *elcome*

Congratulations on your decision to meet the challenge of a college education and your choice of Northwest as the site of your learning experience.

In selecting NWMSU, you have made a major step in an exciting direction, but now you must choose your lifestyle. The Greek System offers you an excellent opportunity to meet new people, present life-long friendships, and also gives you an opportunity to develop academic, leadership, and organizational skills which are useful in everyday life. The advantages of being a member of this system are many: unity, friendship, campus involvement and social advancement to name a few. This decision is very important because it will determine the kind of environment you will be surrounded by for your entire stay here at Northwest.

But the decisions don't end there. Should you decide on joining the Greek System you must next decide on which fraternity you wish to join. The T.K.E. house offers one possibility. The men of Tau Kappa Epsilon are dedicated to maintaining the high standard of excellence that the NWMSU Greek System is known for.

The TKE Delta Nu Chapter was founded in 1954 and since has been the youngest chapter to have initiated 1,000 members! We are a diverse group interested in many different areas, ranging from Fashion-Merchandising to Pre-med. We all may have our different interests but the men here at 222 West Cooper come together and unite under the T.K.E. name to share these different interests, their dreams, their goals, and their lives. But this doesn't tell the whole

story. The whole story can only be learned by doing what you are doing right now. And that is looking around, asking questions, and most of all visiting the houses and meeting the men.

The Northwest Greek System and the men of Tau Kappa Epsilon invite you to learn the whole story. The TKE house opens its doors and extends to you a friendly welcome.

Randy Wolf  
President  
Tau Kappa Epsilon



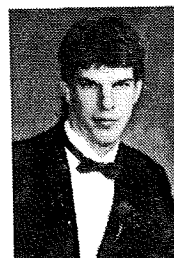
# R *ush: Lifeblood of T.K.E.*

As the school year begins, we hope it will be as exciting as last year was. Rush is your opportunity to take a good look at fraternity life. This booklet is our effort to acquaint you with Tau Kappa Epsilon, the men, the ideals, the tradition. We hope it will give you some indication of our life at Delta Nu Chapter.

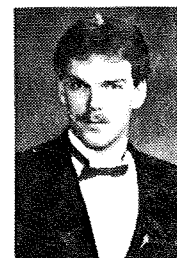
The fraternity members will be more than happy to meet with you and discuss the various philosophies and programs of our chapter as well as the lasting friendships and fun we've had.

We look forward to rush, the fun, the challenges, and most of all to meeting outstanding young men like you. We also wish you luck in the years to come, whether or not they include the Brotherhood of Tau Kappa Epsilon.

## 1986-1987 Rush Chairmen



Thomas Leeper



Roger Nielsen

# Academics

The main purpose in coming to college is to get an education. Tau Kappa Epsilon plays a major part in helping its members attain this goal.

We require each pledge to carry a full course load and to obtain a 2.00 before they can be activated. The actives are always willing to help a pledge through a calculus problem or proofread an English paper. The diversity of T.K.E. plays an important part here. We repre-

sent majors from virtually all fields, allowing the new man to find the help he needs to help him in his class work.

This diversity of academic discipline also plays a part in our test file. Every man contributes his tests and notes to the house after he finishes a course. These tests are a valuable self-help tool enabling a man to have a preview of possible test questions, from which he can become confident that he

understands the material.

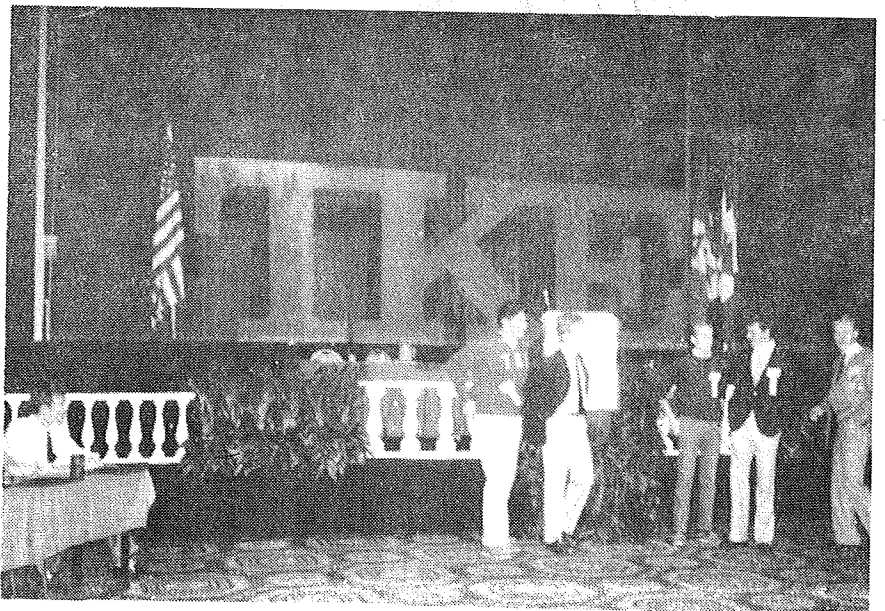
We also require our pledges to attend library hours, which guarantees the quiet hours that most students need. All these things combined enable us to be recognized for our scholarship, both as a whole and individually. We believe that T.K.E. study programs help every man fulfill his potential and receive a well-rounded education.

# Pledgeship: In the beginning...

The pledgeship program at Tau Kappa Epsilon is a time of orientation, not only to the fraternity, but to the university as well. Pledgeship presents the new member the opportunity to become familiar with the ideals, operation and history of our fraternity.

Scholarship is the most important objective of the pledge program, but it is only part of your total education. Our pledge program at T.K.E. helps you to develop qualities of leadership and responsibility while helping you to achieve your personal goals.

Pledgeship is a time of studying, work, involvement, and intense fun, but it is also a time during which lifelong friendships and memories are made.



# TKES *on campus*



- Steve Moss**
- TKE Past President
  - Inter-Fraternity Council President
  - Army ROTC
  - NWMSU Student Senate
  - Eagle Scout
  - TKE Rush Chairman
  - TKE Social Chairman
  - Outstanding Young Men of America
  - National Top TKE (One of 10 in U.S.)



- Randy Wolf**
- TKE President
  - TKE Social Chairman
  - NWMSU Student Senate Vice-President
  - TKE Inter-Fraternity Representative
  - FFA Alumni Volunteer
  - NWMSU Homecoming Public Relations Chairman



- Ron Loida**
- NWMSU Student Board of Regents
  - TKE Rush Chairman
  - I.R.C. President
  - TKE IFC Representative



- Pat Tobin**
- TKE Vice-President
  - TKE Pledge Trainer
  - TKE House Manager
  - Assistant House Deck Chairman '84
  - Assistant Float Chairman '85
  - Army ROTC



- Jim Snelson**
- TKE Pledge Trainer
  - TKE Social Chairman
  - TKE P.R. Chairman
  - Off-campus Student Senator
  - Northwest Cheerleader
  - Who's Who Among American High School Students

## Officers

President	Randy Wolf	Audubon, IA	
Vice-President	Pat Tobin	Maryville, MO	Industrial Business
Secretary	Scott Helm	Lenox, IA	Elementary Ed.
Treasurer	Rick Spler	Audubon, IA	Ag-business
Rush Chairman	Roger Nielsen	Minden, IA	Business Ed-Mgmt.
Rush Chairman	Tom Leeper	Co. Bluffs, IA	
Scholarship Chairman	Kevin Weiss	Virginia, Neb.	Marketing
Historian	Stuart Gorton	Washington, D.C.	Psychology
Historian	Dave Willingham	Sidney, IA	History
Pledge Trainer	Tom Drustop	Co. Bluffs, IA	Accounting
Sergeant-at-Arms	Tracey Howes	Red Oak, IA	Geography
House Manager	Mike Clark		Ag-business
Social Chairman	Chris Greiner	Grimes, IA	Public Relations
Social Chairman	Brent Phillips	Mo. Valley, IA	Marketing

## TKE.

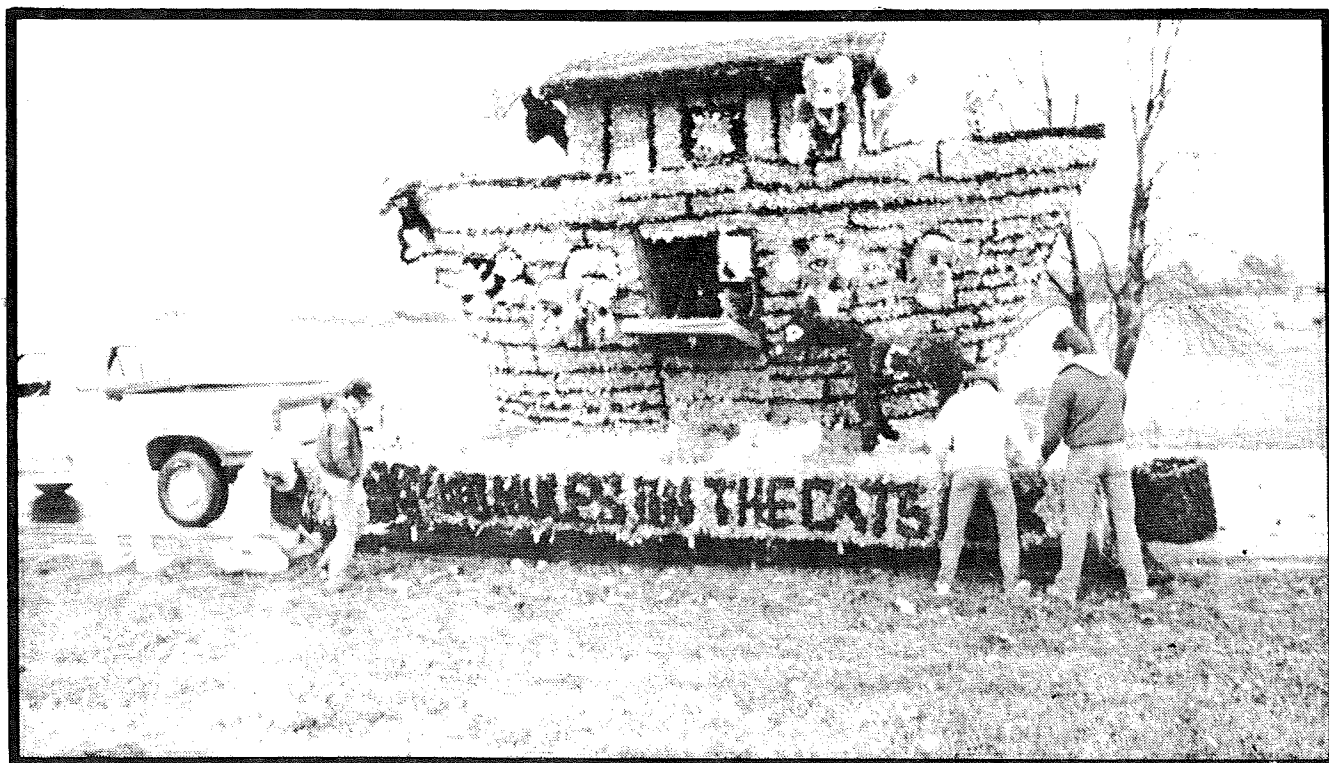
Doug Anderson	Geneva, Neb.		Roger Ites	Des Moines, IA	Broadcasting
Al Andrew	Des Moines, IA	Public Relations	Dave Karstens	Milan, MO	P.E./Coaching
Erich Beeson	Johnston, IA	Business	Ron Loida	Eureka, MO	
Doug Bushner	California	Ag-business	Marcello Menacho	Santa Cruz, Bolivia	
Bruce Carlin	Co. Bluffs, IA		Ed Mattern	Maryville, MO	Business Management
Scott Delong	Sidney, IA	P.E.	Steve Moss	Maryville, MO	Public Relations
Mike Findley	Albany, MO	P.E.	Phil Nielsen	Minden, IA	P.E.
Bill Fountain			Ed Oster	Elliott, IA	Ag-business
Joel Gelger	Robinson, KS		Terry Pederson	Savannah, MO	Computer Science
Todd Gofourth	Stanberry, MO	Accounting	Kevin Ruggard	Audubon, IA	Ag-business
Jeff Gould	Maryville, MO		Jeff Rutledge	Boone, IA	Accounting
Jeff Greiner	Story City, IA	Psych/Math	Chuck Schneider	Urbandale, IA	Ag. Education
John Haake	Kansas City, MO	Public Relations	Jason Sloan	Maryville, MO	Public Relations
Craig Harrah	Fremont, Neb.	Mass Media	Jim Snelson	Hartford, IA	Public Relations
Rodney Hernandez	Ravenwood, MO	Fashion Merchandising	Kevin Wells	Liberty, MO	History Ed.
Rich Hoffman			Roger Yount	Smithville, MO	Personnel Mngt.

# Homecoming

Fall is an exciting time of year at Tau Kappa Epsilon. Footballs fill the air, the leaves turn colors and thoughts turn to building a prize-winning float for the Homecoming parade. The float is a chance to get involved and also to show Alumni that the TKE house is stronger than ever.

Last year's float, entitled "No Mules on the Cat's Ark," received the first-place trophy.

Homecoming is the time for Alumni to see what has changed since they were in school, both changes in the chapter house and in old friends.



# Social

The social aspect of fraternity life is an important one. Our year-round social calendar allows us to relax outside the classroom. At Tau Kappa Epsilon we feel that a strong social program aids in forming a more well-rounded individual.

Some of our social activities include:

**TKE Fog**—a great chance to meet the women of Northwest.

**Fall Hayride**—for TKEs, Pledges and their dates

**Alumni Homecoming Celebration**—many of over 1,000 alumni will return to Northwest and the TKE house to visit old friends and the active TKE chapter.

**Neighborhood Luncheon**—families in the TKE neighborhood visit the house for a meal cooked by the TKEs.

**Fall Informal**—for TKEs and their dates.

**TKE-Daughter Christmas Party**—an evening at the house with Christmas caroling, a fire in the fireplace and gift exchange with our little sisters, the Daughters of Diana.

**TKE Island Luau**—our annual Luau held usually in February with plenty of waterfalls and grass skirts.

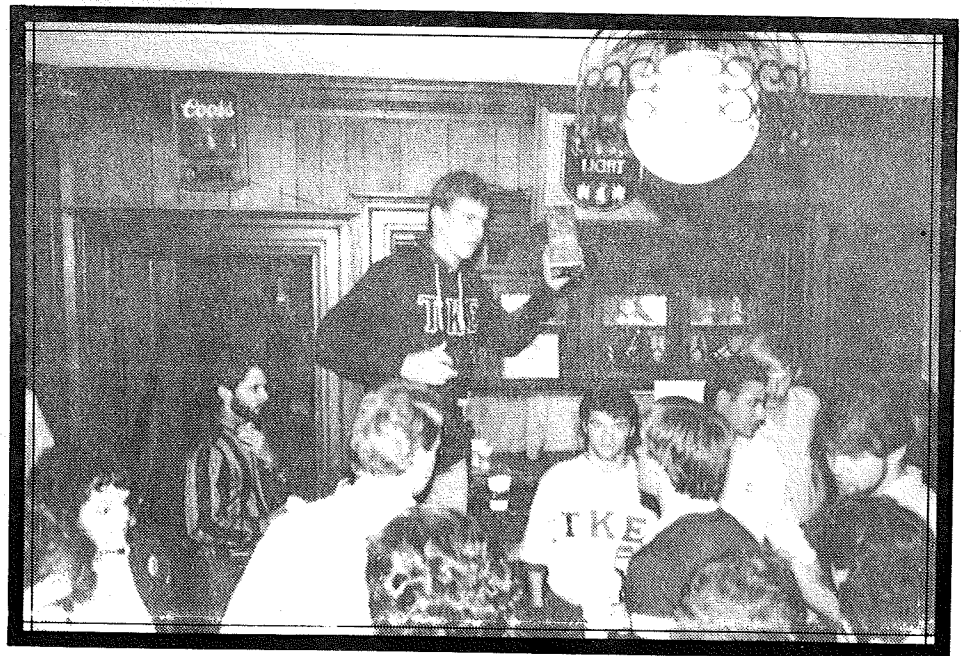
**TKE Sweetheart Dance**—the TKE Sweetheart is elected and a dance for TKEs and their Sweethearts is held in her honor.

**Nuclear Waste Party**—get nuked at the TKE House.

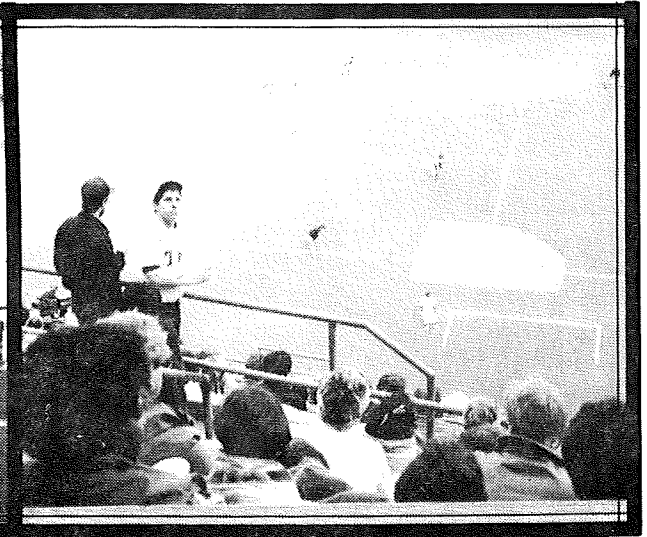
**Red Carnation Ball (RCB)**—our annual formal held at a Kansas City hotel where the TKEs, the TKE alumni and their dates spend a weekend in Kansas City. We end the weekend with a trip to Royals Stadium and an afternoon at the ball park.

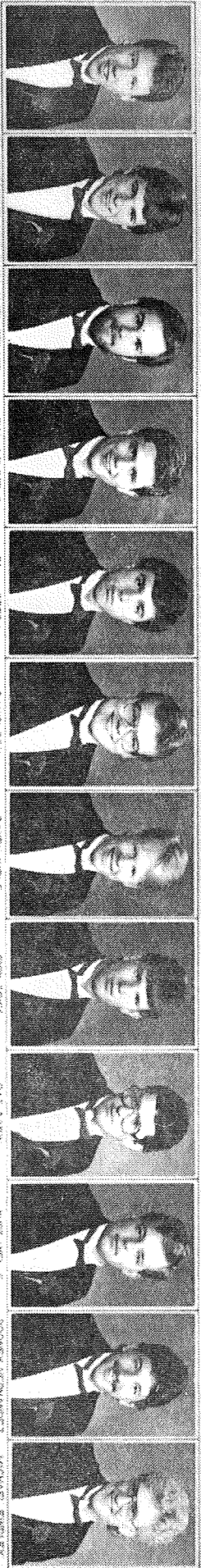
Along with these major social events, we also have mixers with the sororities. These functions allow the TKEs and the sororities to have a party together at the TKE house. The mixers are definitely a time to meet Greek women at Northwest.

TKE strives for variety in everything we do. Our social calendar is designed to have a variety of social events and at the same time appeal to everyone's instinct for fun.

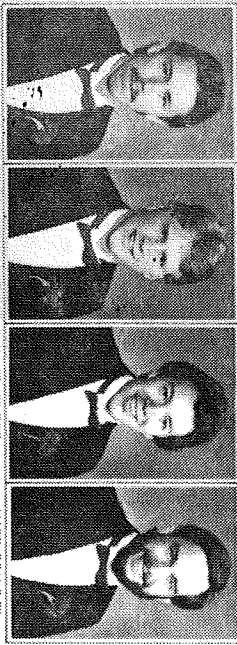


# Outdoor Socials

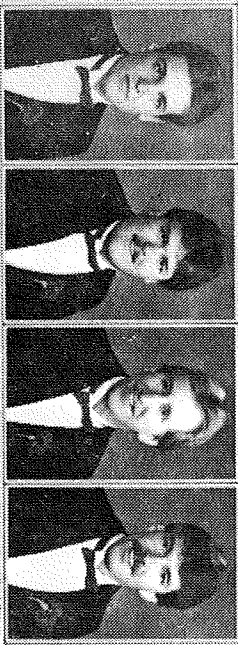




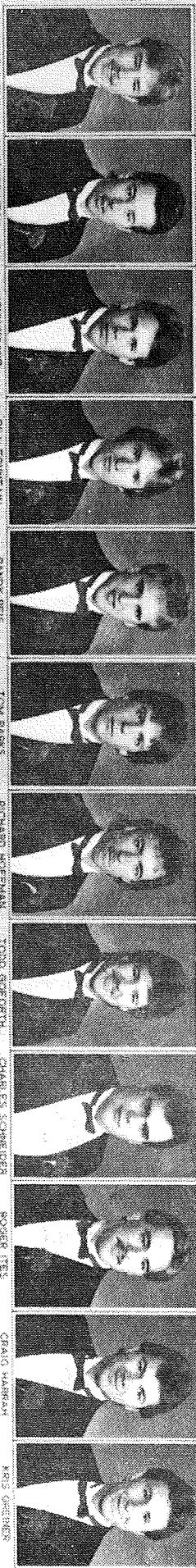
JIM H. SHELTON  
KEVIN HOGGARD  
OWEN STRAUB  
TOM BRISTOL  
ED MATTHEW  
DAVID CUK  
RACI WENZ  
RON EBER  
PAT LEBEN  
KURT WELLS  
SCOTT WENHARTZ  
MICHAEL BIELLET



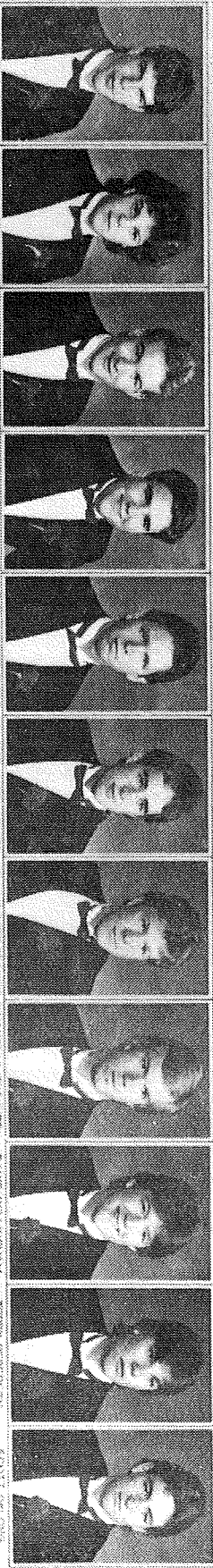
DAVID CASALE  
ROGER VOLANT  
JIM SLOAN  
MARK POLLOCK




BRENT PHILLIPS  
DAVE HASTANG  
JEFF GREINER  
PHILIP WELLEN

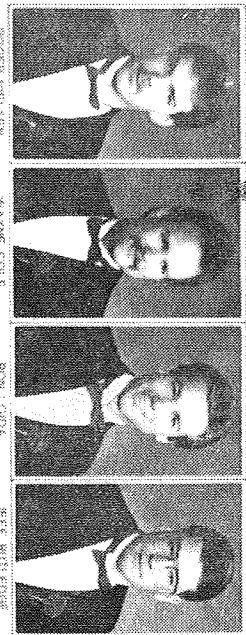


BRIAN ZASLIN  
BRETT NEWMAN  
JOHN MAANE  
BILL FOUNTAIN  
RANDY REIS  
TOM PARKS  
RICHARD HOFFMAN  
TODD BERTHOFF  
CHARLES SCHNEIDER  
ROGER REIS  
ORALD HANNAH  
KEB GREINER

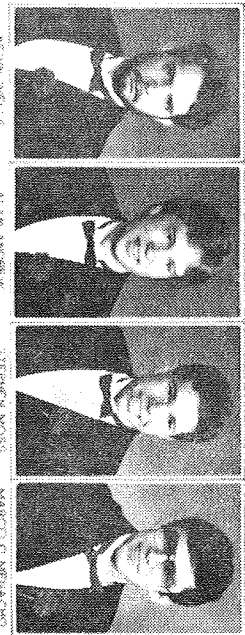


THOMAS LEEPER  
DOUG ANDERSON  
MIKE BANGER  
STUART SCORTON  
ERICH BEESON  
MIKE CLARK  
JOE SAEBERS  
DOUGLAS BRISHER  
DAVID WILLINGHAM  
TERRY PETERSON  
SCOTT ORSON

1985  
  
 1986  
 Delta Psi  
 DELTA PSI  
 Northwest Missouri State University



WESLEY WELLS  
ALAN ANDREW  
JEREMEN MOSS  
MARCUS NEBACHO



KEVIN WELLS  
ALAN ANDREW  
JEREMEN MOSS  
MARCUS NEBACHO