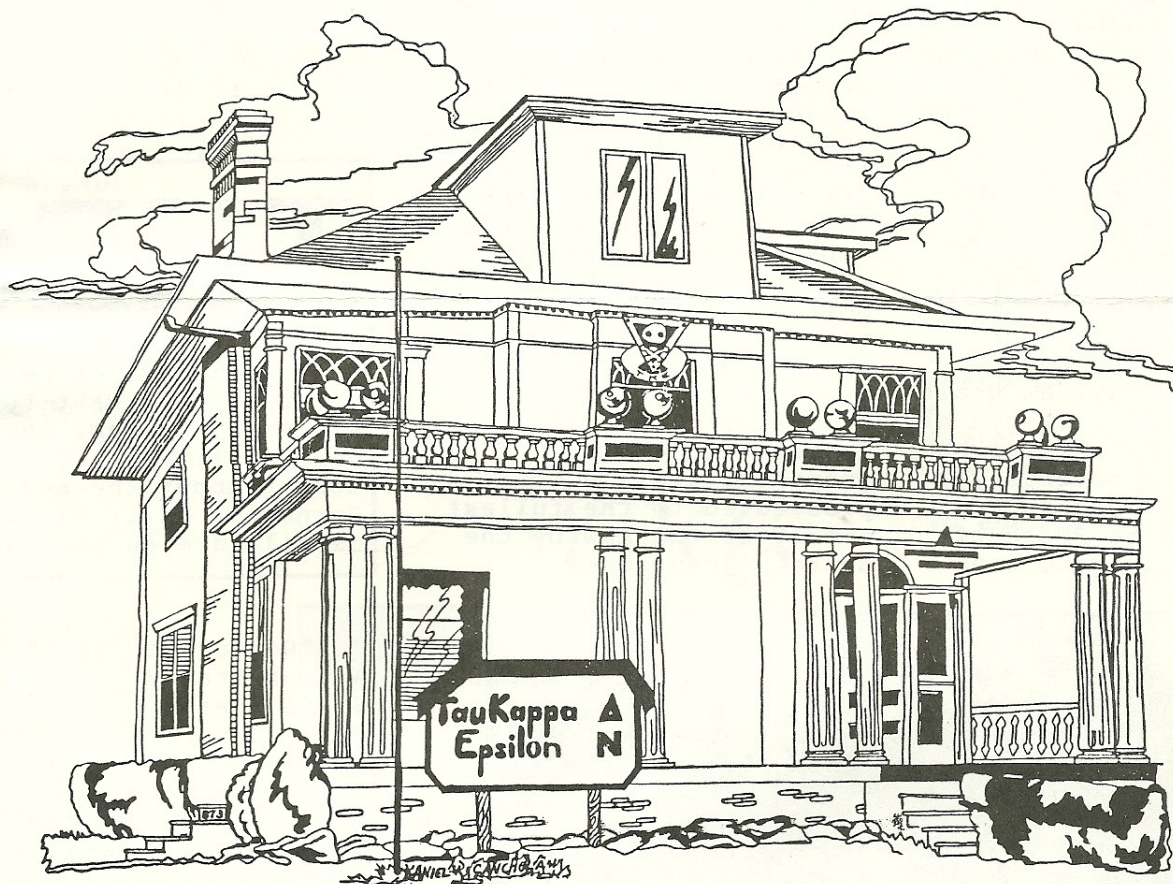


# THE DELTA-NU REVIEW

Published by Delta-Nu Chapter for Alumni

## Tau Kappa Epsilon

Merry Fraternity Christmas



### Delta Nu Chapter

DECEMBER

Northwest Missouri  
State University  
222 W. Cooper  
Maryville, Missouri 64468

1988

# Prytanis and Board Report

Hello once again, it's time for another Delta Nu Review so we can report to you improvements and developments in our chapter.

As resigning Prytanis and upcoming Alumni. I look at the past year in Delta Nu with pride and respect for the amount of

success Delta Nu has accomplished. The active chapter and the Board of Control have worked together to make

See "BEESON" Page 7

With the beginning of the new school year, concerned TKE Alumni have reorganized the Board of Trustees of Delta Nu Chapter to provide the Active Chapter assistance and direction in financial, social, and long range planning matters. To this end, the Board will hopefully function as it did in the days when the naming of Delta Nu Chapter as "Top TKE Chapter" was an annual affair. This may, from time to time, mean that the Board will be asking for input from the the Alumni in meeting our immediate needs and concerns as well as goals for the future. If you are contacted for help or have suggestions/comments you wish to offer, please direct them to Board of Trustees Chairman, Todd

Schuler.

At the October meeting of the Board, the active chapter reported on the success of Homecoming and the Alumni party. However, it was also reported that a few Alumni Frater's, caught up, perhaps, in the spirit of the occasion became over zealous and damaged some areas of the house and the personal property of the active's living there. After some discussion it was agreed that in the future, this type of wanton behavior WILL NOT BE TOLERATED. Any person engaging in illegal activity, i.e., through the use of drugs on TKE property or at TKE functions or the willful destruction of TKE property, will be prosecuted to the fullest extent of the law by the Board of Trustees.

Again, comments and/or suggestions from the Alumni are encouraged as we attempt to perpetuate the lofty ideals and principles of Tau Kappa Epsilon to which each of us subscribed as Frater's in the Bond.

Board of Trustees

## TKES

We the members of Delta Nu chapter again want to wish you and your families happy holidays. Do not forget about the Red Carnation Ball; all the details are on page 4.



"Homecoming Game" Alumni Frater's Steve "Peat" Moss (centered, stripped shirt) and Dave Teeter (right) watch the Bearcats lose another disappointing Homecoming game.



# Rush Begins New Year

Rush! What a great semester. A final pledge class of 25 for the fall of 88!

Rush this semester was conducted with a unique new philosophy. The TKE, "if you want us then prove yourself" was changed to "TKE, if you want us we want you. Let us show you what we have to offer." Leading the way for this change was our Smoker

speaker. Frater Dr. Stephen Brightwell from Kansas City Mo. told the rushees of how TKE benefited him and how it could do the same for them. He also referred back to great times he had had as a TKE member. A week later after this speech we received 31 signed bids.

So many positive notes were left behind that I

foresee the same numbers again for the spring. TKE is on the upswing and we need your help! Rush depends on dollars and the dollar support of our alumni! Thanks for this years help and we here at Delta Nu look forward to your continued support. Below you will find the listing of the 25 new initiates.

Brett Cooper

\* notes the two legacy's.

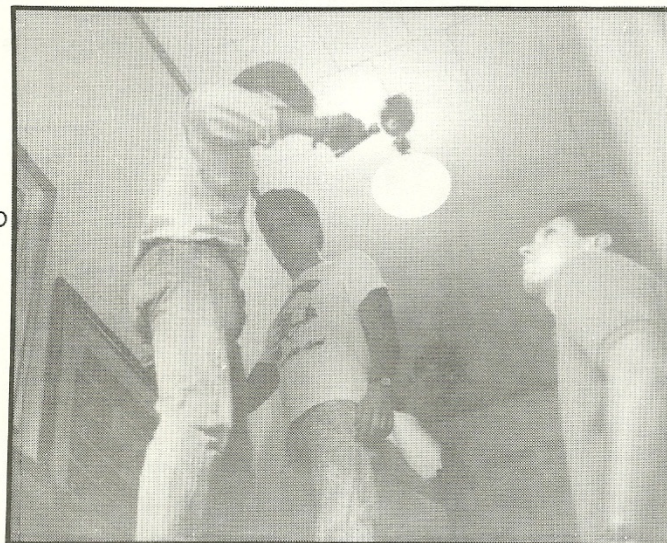
Marty Baier  
Cedar Rapids, Ia.  
Mike Bryant  
Maryville, MO  
Todd Clites  
Hastings, Ia.  
Kevin Collier  
St. Louis, MO  
Mike Crane  
Smithville, MO  
Scott Dorman  
Perry, Ia.  
Jim Gleason  
St. Louis, MO  
\*Mike Gooding  
Maryville, MO  
Todd Hansen  
Ames, Ia.  
Marcus Henry  
Columbus, Ne  
Dave Hestand  
St. Joseph, MO  
Steve James  
Hastings, Ia.  
Greg Knowles  
Excelsior Springs, MO  
Eric Mansfield  
Kansas City, MO  
Shawn McCollom  
Kansas City, MO  
Mark Mikesell  
Chariton, Ia.  
Michael Miller  
Des Moines, Ia.  
Doug Reis  
Greenfield, Ia.  
\*Tom Ruggard  
Audubon, Ia.

Lonnie Sauter  
St. Joseph, MO  
Jim Seckington  
Des. Moines, Ia.  
J.T. Sloan  
Des Moines, Ia.  
Marc Stith  
Odessa, MO  
Pete Wieland  
Bethany, MO  
Ching Yap  
Malaysia

Fall of 1988 saw quite an active semester centering around the TKE House. Our on campus relations were greatly improved with the hosting of the male dancers, The Men of L.A. early in the semester. Homecoming became our main focus shortly following the men of L.A. We had a very slim time frame between the two events but managed

see "SOCIAL" page 4

## TKE



"Improvements"  
Fraters Dave Hestand and Mark Mikesell replace the composites after the new wall paper had been hung. This all under the direction of Prytanis Erich Beeson.

# RCB Is Set in April

Hope your Christmas season is going great! Now that your money has been spent for Christmas it's time to start planning ahead for the spring. Coming up is this year's RCB. It has already been set up and I think it will be the greatest ever. The spring 1989 Red Carnation Ball will be held at the Western Crown Center in Kansas City, MO. The date for RCB is Saturday April 15, 1989. We encourage all Alumni to please take time out this year and come join your fellow Fraters. If you are planning on attending you will place your own reservations. The phone number is (816) 474-4400. Make sure you tell them you are with Northwest Missouri State University Tau Kappa

Epsilon Chapter. This is to insure you will be grouped with everyone else. Make sure you tell them Northwest Missouri State because that same night right next to us will be Kansas States TKE chapters RCB. The prices are \$70 single room or \$70 for a double room. You can make reservations no later than March 31st 1989.

### General Information

Check In Time: 3:00  
 Chapter Meeting: 6:00  
 (Pershing Place North Room)  
 Dinner Out: 7:00 - 9:00  
 RCB Dance: 9:00 - 1:00  
 Check Out: 1:00  
 (April 16th)  
 If next day activity is planned you will be notified.

RCB this year is going to be very special. Cost have risen so feel free to donate to this years Red Carnation Ball. This would go towards the music (possibly a band), and the other extra's we are planning to provide. Let's keep chapter costs down and make this the best RCB ever. You can send donations to:  
 Mark Gerling  
 416 Franken Hall  
 NWMSU  
 Maryville, MO. 64468.

If you have any questions don't hesitate to call (816) 582-7543 and ask for Mark. Thanks for everything and I hope to see you there. Don't Forget Those Reservations! The sooner the better!

### "SOCIAL"....

to pull a fourth place prize with our float entry. There was also quite an alumni turnout for that weekend along with some very memorable social functions.

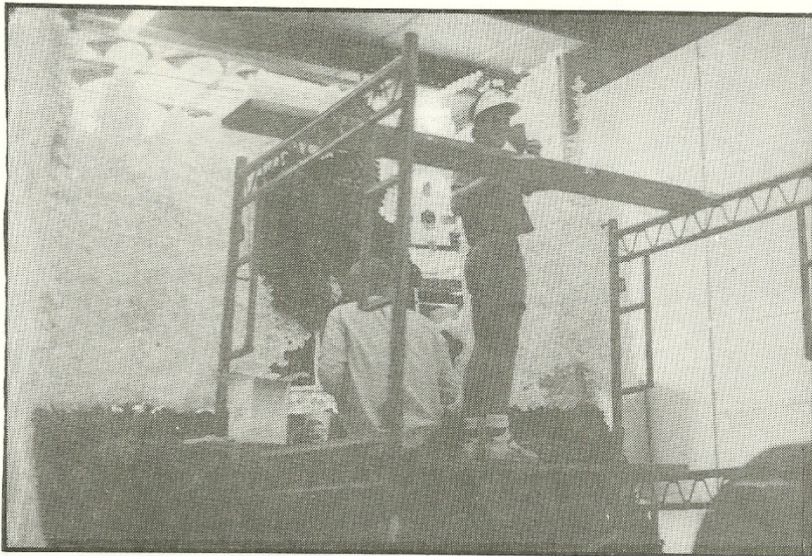
Once homecoming was under our belts, it was time to put importance on Greek relations by hosting one Delta Sigma Phi/TKE mixer, as well as our usual sorority mixers. All were very successful.

Although it goes without saying, there were numerous other social gatherings at the house that greatly enhanced our campus image for conducting ourselves as gentlemen along with being wonderful hosts for rubbing elbows with the entire student body.

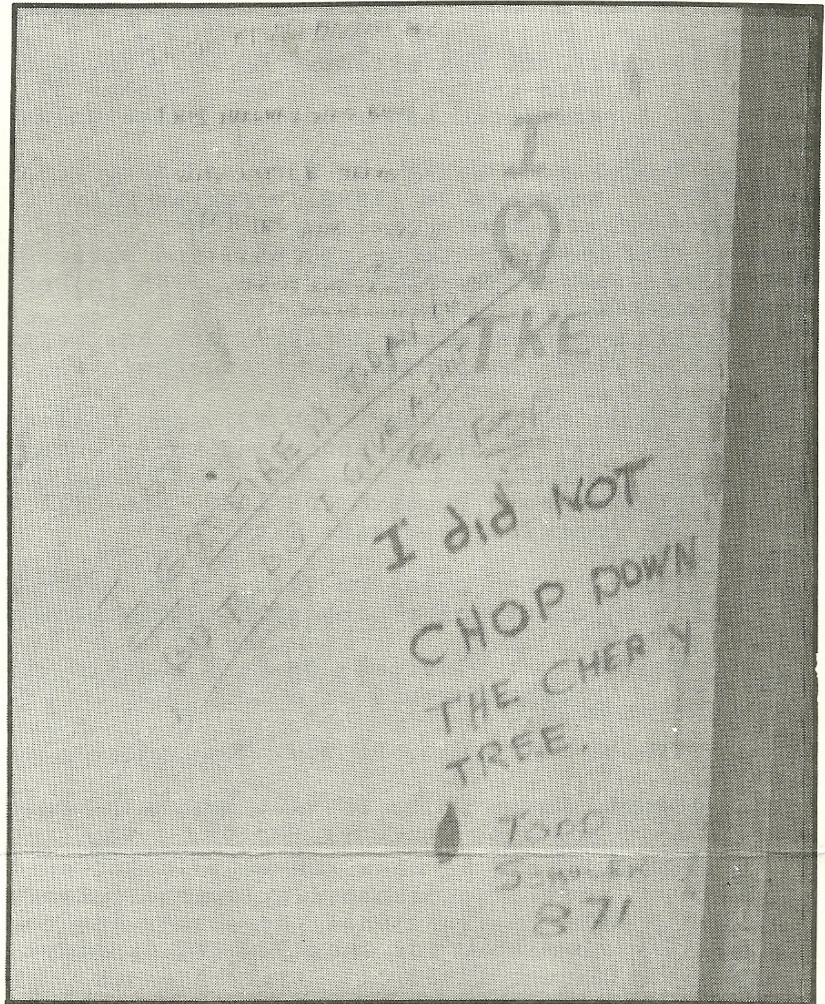
Dan Worthley

### "Float Again??"

Frater's Dave Hestand (sitting) and Mark Suess work hard on the crest of the 1988 Homecoming float. The float received a fourth place finish in this years parade.



"House Improvements" Underneath the "old" wall paper were the lines of the past. As evident here, Board Of Control President Todd Schuler seemed to think that he didn't chop down the cherry tree. But we all don't believe him. This was discovered after the old wall paper was taken off and the new was put on.

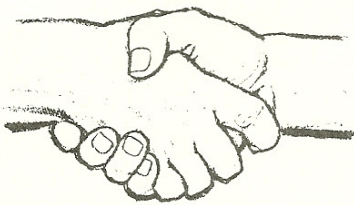


This year the house received a major face lift inside and out. The Delta Nu alumni donated paint to us for the exterior of the house. On the inside we put up new wallpaper in the hallway and in the Red room. We also installed a new sink in the second floor bathroom. With the support of the Board of Control we installed a combination door lock and automatic door closures.

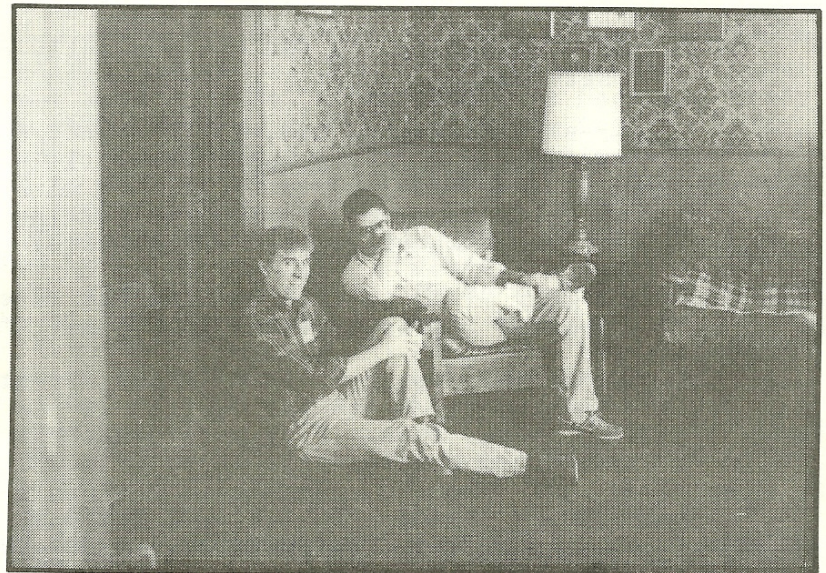
The house is filled with fraters and all their rent is paid. The house will also be

full this coming spring semester. Another improvement the house could use would be new furniture for the Red

room. We would be very appreciative if anyone could contribute furniture that could be used. Troy Suhr



"Taking It Easy" Frater Dave McLain and Alumni Frater Patrick Tobin take time out in the Red Room to talk about the way it was when he was active at the TKE House.



## "With the Delta Nu Alumni"

Frater Jeff Rosincrants, DN 957, and Daughter of Diana Tanya Zirfas, were united in marriage October 22, 1988. Jeff recently completed Law school at Drake University, Des Moines, Iowa.

Frater Paul Haake, DN 840, and Mary Frances Arbeiter were married November 26, 1988 in Kansas City.

Frater Mark Witthar, DN 853, and Diane Crees, an alumnus of Phi Mu, were married August 13, 1988 in Des Moines.

Frater Joe Liston, DN 1027, and Amy Ericson a member of Delta Zeta, have announced their engagement.

Frater Doug Schieber, DN 931, and Colleen Park a member of Delta Zeta, have recently announced their engagement.

Frater Kevin Ruggard, DN 1000, and Jill Ritter a Daughter of Diana were married in Kansas City.

Frater Mitch Owen, DN 944, and his wife Nancy Wheeler Owen are recent parents of a baby girl, Samantha Owen.

Frater Curt Claycomb, DN 949, and his wife Tami Pitts Claycomb, are recent parents of a baby boy.

Frater Pat Tobin, DN 969, has been employed in Milwaukee, Wisconsin.

Frater Wayne Cole, DN 917, has been employed as a manager for Helzberg Diamonds in Cedar Rapids, Iowa.

Frater Craig R. Shaw, DN 940, is currently an Account Executive for WZPL in Indianapolis, Indiana. Craig is also getting involved with TKE International, he is serving on the local arrangements committee for the 1989 TKE Conclave to be held in Indianapolis, August 16-20.

Frater Tom Burson, DN 914, is finishing Flight School with the Army National Guard in Fort Rucker, Alabama.

Frater Kirby Luke, DN 926, has recently completed a one year tour in Korea as a helicopter pilot for the U.S. Army. He is currently a 1st Lieutenant at Fort Drum, New York.

Frater Joe Saubers, DN 930, is currently employed with ITT Financial Services.

Frater Bill Adams, DN 905, is the owner/manager of the Computerland franchise in St. Joseph, Missouri.

Frater Chris Mooberry, DN 900, is working in Hutchenson, Kansas as an Account Executive with RJR Nabisco.

Frater Tony "TKE" Dorrel, DN 920, has recently been promoted with Roadway Package Systems in Kansas City.

Frater Keith Jorgensen, DN 438, is currently serving as chapter advisor for Delta Tau chapter of TKE at the University of Northern, Iowa. Frater Jorgensen is a Sales Associate with Advanced Systems Inc. in Waterloo, Iowa.

Frater Brad Brenner, DN 774, has moved to Atlanta, Georgia from Jacksonville, Florida. He is employed by Brown Shoe Co.

"BEESON".....

this semesters improvements possible.

The chapter is getting back to the values the fraternity was founded on. Delta Nu is much more than a social outlet, it is a rewarding college experience. I hope the upcoming RCB will rekindle those fraternal friendships and leadership experiences that Delta Nu has given me. I hope you will feel compelled to carry on your fraternal obligation to Delta Nu. It is with this I ask you to support the Alumni Association at our upcoming RCB. With your help we can and will do many great things.

Erich Beeson



# NEWS RELEASE

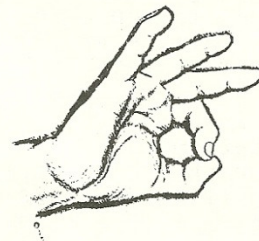
Brett Cooper, past Historian for Delta Nu was elected last week as Vice President of Northwest's Inter-Fraternity Council for 1989.

## Spring Rush Schedule

Dry Rush Parties  
January 21 and 27, 1989.  
The smoker will be  
February 1, 1989 at  
Molly's, all of you are  
welcome. Then bid day  
will be on February 6,  
1989.

This semester as hypophetes I have been working on securing funds for a new case for cherry and gray that will hang in the red room. The composite for this year was taken Thursday November 10th. We have changed to 'Valentine' Composite Co. due to the lower price they offer over Fraternal Composite! The new neophytes went through formal activation on Monday, November 14th at the house. This semester looks to be winding up on quite a good note, I hope yours is also.

Jeff Kelly



The 1988 Fall pledge class began with thirty-one new associate members. We will end with a total of twenty-five new members at the end of this pledgeship. Not all of the guys that de-pledged this semester are gone for good. A couple of them have suggested an interest in pledging next semester.

My associate or assistant pledge trainers this semester were Frater Andy Ruble and Frater Shawn Wake. They have done

an excellent job and I could not have done it without them. Before pledgeship began we decided to change the format of the pledge books. Instead of having just two books we switched to three. It took longer for the pledges to catch on but I think it helped them get to know the active's better. The tests were moved from Sunday nights to Monday nights so that they would not have to worry about getting back on Sunday nights.

This way we knew whether they were back and ready for their tests. The rest of their pledgeship was as it has been for the last several semesters.

As with all pledge classes they have had their ups and downs, but I feel they have done a real good job. They showed signs of improvement as the semester went on and I feel they will make great active members. It has been a real pleasure working with them.

Dave McLain

1989 DN Officers Hypophetes  
Prytanis Eric Carlstedt  
Brett A. Cooper Pylortes  
Epiprytanis Frederick Brown  
Mark Suess Hegemon  
Grammateus Bill Fountain  
Rick Kimball Social  
Crysophylos Jeff Kelly  
Tom Bart Dave Harris  
Historian Rush Chairman  
Pete Wieland Scott Dorman  
Lonnie Sauter

House Manager  
Mike Wynne

Delta Nu Review  
Staff:  
Histor Brett Cooper  
Kip Hilsabeck  
Typist Mark Gerling  
Mike Wynne  
Photo Credits:  
Troy Suhr

As historian I ask for  
your comments on this  
years Delta Nu. It's a  
great pleasure to have  
this for you but we need  
your input. Send  
suggestions to the  
Prytanis. TKE House.  
Thanks!!!

# TKE

Tau Kappa Epsilon  
Delta Nu Chapter  
Board of Trustees  
1988-89  
Todd Schuler #871  
Chairman  
Pineridge #23  
Maryville, MO 64468  
Home Tel: (816) 582-4706  
Work Tel: (816) 583-8131  
Ext 180  
Don Edwards #727  
Secretary  
216 Park Avenue, Apt. 2  
Maryville, MO 64468  
Home Tel: (816) 582-2582  
Work Tel: (816) 944-2316  
Steve Moss #927  
TKE Region Advisor  
7229 N.W. Donovan Dr.  
Kansas City, MO. 64513  
Home Tel: (816) 587-1081  
Work Tel: (317) 872-6533

Rod Auxier #681  
Vice Chairman  
1225 Crestview Dr.  
Maryville, MO. 64468  
Home Tel: (816) 582-2433  
Work Tel: (816) 562-2923  
Lon E. Edwards #576  
Treasurer  
2100 Lovers Lane  
St. Joseph, MO. 64505  
Home Tel: (816) 233-4522  
Work Tel: (816) 881-3428  
Kevin Smith #932  
Alumni President  
3216 Mitchell  
St. Joseph, MO. 64507  
Home Tel: (816) 232-4982  
Harold Gooding #487  
1068 Debbie Lane  
Maryville, MO. 64468  
Home Tel: (816) 562-2627

Larry Apple #325  
405 W. 12th Street  
Maryville, MO. 64468  
Home Tel: (816) 582-7441

Steve Fox #806  
116 S. Clayton  
Maryville, MO. 64468  
Home Tel: (816) 582-3734  
Work Tel: (317) 562-1672

Dick Wiles #365  
604 S. Fillmore  
Maryville, MO. 64468  
Home Tel: (816) 582-4663

Ron Loida #971  
3934 N.W. 82nd Street  
Kansas City, MO. 64151  
Home Tel: (816) 468-4582

Tau Kappa Epsilon  
Delta-Nu Chapter  
222 West Cooper  
c/o Histor  
Maryville, Missouri 64468

12-27-88

U.S. POSTAGE  
PAID  
Maryville, Mo.  
Permit No. 267  
Zip Code 64468

A  
MR. ELWOOD L. REED  
BOX 130  
CHILLICOTHE

MO 64601