



The Delta Nu Review



Volume 5, Fall 2012

www.nwtke.com

Sept/Oct 2012

Alumni Board of Advisors President's Report – Mark Witthar, 853

Dear Fraters:

What a year it has been for Delta Nu. We had a devastating fire the week before the young men were to move into the house but these young men rallied, found places to live and helped us do everything we needed to build a truly world class fraternity house. Those same young men worked hard on all the things that they do – Recruiting, Homecoming, Intramurals, Philanthropy and Scholarship. To that end, they won the highest award for a Teke Chapter – The Top Teke Chapter Award.

Only 15 were given out this year and Delta Nu won her 8th award. Now we move into the next phase of our development both as a chapter and as an alumni group.



The active chapter needs to continue building a culture of pride and respect. Pride in Delta Nu and what WE stand for as a group. They need to develop more respect for the property and each other. We do these things already but we need to do more. Changing the culture in any organization is difficult. It takes time, effort and a consistent approach. We are moving in the right direction and I want to thank everyone – actives and alumni on behalf of the Board of Advisors.

You will read about the many accomplishments of the active chapter and the alumni in this issue and I hope you will feel good about what we are doing. Please print this document out and read it completely. I believe you will be impressed with the amount of effort extended by the Alumni Assn, Board of Advisors and Active Chapter!

If you are in Maryville, please take a moment and stop by the house. Chances are you will meet some young men that will remind you of yourself some years ago. Walk through the house and observe, then go to our website www.nwtke.com, go to the News and Info tab where you will find the "Housing Report Form". Give us direct feedback about the facility. When I said we are trying to change the culture, this is a way you can help. It provides specific feedback to the active chapter and to the Property Committee in helping us identify issues before they become major problems. Please consider this on your next trip to Maryville. I love the Fraternity!

Yours in the Bond, Mark B. Witthar, 853, Chairman, Board of Advisors - Delta-Nu Chapter, mwitthar@ford.com

TKE House Capital Improvements – Steve Moss, 927

Many thanks go to the 86 donors listed here who graciously supported the Delta Nu TKE House Fire Recovery Fund. Collectively, these men have contributed more than \$23,000 to aid our fraternity in the recovery and reconstruction of the TKE house in Maryville.

Delta Nu now has one of the safest and most updated houses in all of TKE. Your support has helped make this success possible. Contributions for the Delta Nu TKE Fire Recovery Fund are still being accepted:


Please encourage your fellow Fraters to get on board and support this continuing effort with the fraternity.



Fire Recovery Fund Donors
August 2011 through September 2012

Delta Nu Chapter
Northwest Missouri State University

Scroll	Frater	Scroll	Frater	Scroll	Frater	Scroll	Frater
8	Reid Anderson	438	Keith Jorgensen	676	Greg Weaver	901	Dave Teeter
35	R.B. Wilson	474	Stanley Swan	694	Roger Johnson	920	Tony Dorrel
51	Lloyd Mather	481	William Costello	715	Bert Hoeck	927	Stephen Moss
57	Millard Haning	533	Bruce Barlow	726	Mark Dickey	930	Joe Saubers
76	G. Paul White	534	Boyd Campbell	727	Don Edwards	932	Kevin Smith
94	Richard Wilcox	536	Steve Eckard	730	Glen Gude	940	Craig Shaw
104	Benny Johnson	541	Merle Jones	742	Wayne Chatham	943	Tom Drustrup
208	Stuart Bintner	547	Donald Morris	759	Alan Nicholas	949	Curt Claycomb
235	John C. Campbell	549	Darwin Rold	775	Steve Brightwell	957	Jeffrey Rosencrants
276	Ed Propst	596	Benson Krull	784	Jeffrey Taylor	996	Charles Schneider
280	Forrest Schnobrich	597	Douglas Rinas	787	Tim Golden	1046	Brett Cooper
281	Orlo Shroyer	602	Randy Buxton	812	John Pitts	1059	Mike Wynne
294	James Hawkins	604	Arthur Jablonski	820	David Rice	1077	Lonnie Sauter
295	Douglas Johnson	608	Clifford Birdsell	833	Jeffrey Rice	1120	Michael Reiff
317	Ronald Gayler	633	Ron Woolsey	853	Mark Witthar	1163	Patrick Halsted
334	Larry Gerdes	640	Bobbie Nielsen	856	Roger Tullberg	1207	Patrick Trahan
349	Steve Neuroth	648	Kevin Kemmerer	858	Ron Beaver	1339	Ryan Tompkins
351	Chuck Riley	650	Richard Reetz	ΞH146	Jeff Borchardt	1354	Brian Carroll
364	William Templar	651	Brad Shelton	861	Mike Christensen	1379	Brandon Juon
371	Richard Griffin	666	Scott Keilbey	873	Dan Canchola	1386	Nathan Welch
430	Reginald Turnbull	675	Dick Westbrook	874	Ronnie Edwards	1408	Joe Weinstein
				895	Mark Rinker	1423	Steven Yapple

Contributions can be made on line at nwtke.com or mailed to: TKE Fire Recovery Fund C/O Brad Shelton TKE BOA, 1805 Arabian Ave. Naperville, IL 60565 Please make checks payable to: TKE Fire Recovery Fund or please visit www.nwtke.com/content/tke-fire-recovery-fund and click on the Donate icon  on the main webpage. To contribute through the mail, please send your check payable to the Delta Nu Alumni Association and on the memo line, write "Fire Fund". This will insure your donation is credited to your "Teke for Life Wall" balance.

Y.I.T.B., Steve Moss, 927, Chairman, TKE House Capital Improvement Committee, semoss@socket.net

Active Chapter Report – Prytanis Chris Fuller, 1538

Top TKE Chapter Awarded for 2011-2012 School Year

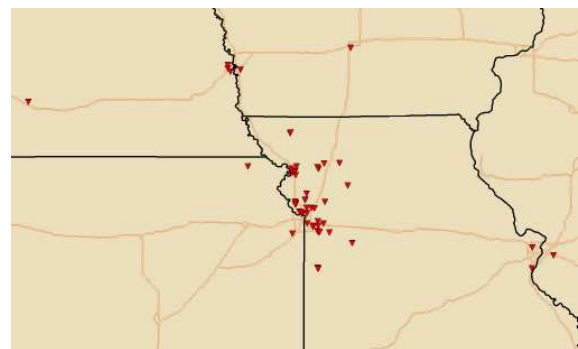
The Delta Nu Chapter of Tau Kappa Epsilon (TKE) at Northwest Missouri State University received the highest honor amongst TKE chapters nationwide for the 2011-2012 academic school year- Top TKE Chapter. This is the third Top TKE Chapter award the fraternity has earned in the past five years, making it one of the top chapters nationwide. TKE Fraternity only awarded 15 Top TKE Chapter awards out of a total of 290 chapters. Criteria for Top TKE Chapter measures individual chapters on students’ success in academics, community involvement, university extracurricular activities, alumni relations, and overall strength of the student organization. The active chapter is excited for a new semester and is eager to try and win back to back top TKE awards. As we are only 4 weeks into school our men are determined to surpass the goals set by the Grand Counsel in the in the Key Result Areas for each chapter.

Recruitment and Chapter Size: This fall our chapter had a great rush. We handed out 30 bids and accepted 24 men. Pledge ship has begun and our hegemon, Nate Beaver (‘1552’) legacy and son of Frater Ron Beaver (858) is preparing these MEN to be “better men for a better world.” With the NEW MEMBERS, we have a chapter size of 81 which puts us in the top 2 for biggest fraternity on campus. We will have 4 men graduate in December and another 10 in the spring. Our retention rate is one of the best on campus having over 20 senior “status” members and 15 plus juniors. Future plans include a fundraiser called “Rock the Vote”. We are having bands play at the house and opening the doors to the community. It will cost five dollars to get in and we will be selling shirts before and during the event. We will do another concert to help raise money for St. Jude’s later in the semester.

Community Service and Philanthropy: We have two philanthropy events scheduled for the month of October. We are doing a bowl-a-thon with the ladies of Alpha Sigma Alpha which will help raise money for Special Olympics as well as doing a pool tournament hosted at Carson’s Sports Grill. Frater Carson has graciously offered to host the event and pay for the pool games. Homecoming is pushed back to November 3rd which gives us enough time to get a good start on float. We are doing a float with the ladies of Phi Mu and our excited to show off our design. We are going for supremacy so look for lots of creative entrees by the men of Tau Kappa Epsilon. We will be hosting a lunch after the parade for anyone that would want to stop by and take a tour of the house. Look for more details via email as we move closer to the date.

If anyone would like to make a donation to help us with our St. Jude’s fund raising goals this semester, please send your donation to 555 W. 9th St Maryville, MO 64468 in Care of Chris Fuller. Any donation is greatly appreciated.

Chapter Size and Make Up: The current active chapter has 57 active members, 3 from Nebraska, 2 from Iowa, 1 from Illinois and 51 from Missouri. We have 15 seniors, 16 juniors and 26 sophomores. The 24 new members are all freshman and 23 are from Missouri with one from Kansas.



Map shows the home towns of the active chapter

Involvement and Alumni Relations: As part of ongoing character development, the chapter plans to have 20 attendees at both non-TKE and TKE-focused leadership conferences this year, while participating in a total of 10 intramural sports leagues, as well as campus leadership roles. Past Prytanis Gunner Sumy said in a recent article, “TKE has always prided itself on having a diverse group of men. From intramural champions to Student Ambassadors to Northwest athletes, the Delta Nu chapter continues to bring together men, not for wealth, rank or honor, but for personal worth and character.”



Y.I.T.B., Prytanis Chris Fuller, 1538 - s501152@mail.nwmissouri.edu

Pledge Trainer Report - Nate Beaver, Hegemon - Fall 2012, 1552

This past year we again offered the TKE Welcome Scholarship. We interviewed seven applicants for the scholarship that were all very well rounded polished candidates. We plan to offer this scholarship funded entirely from Chapter Dues. Below are the 24 new members and their home town.

Luke Berry	Kansas City	MO	Kyle McLaughlin	Smithville	MO
Jesse Birkenholz	Weatherby	MO	Keenan Morrow	Adrian	MO
Jordan Burton	Maryville	MO	Vaibhav Patel	Kansas City	MO
Joshua Elkins	Kansas City	MO	John Pritchard	Waynesville	MO
Jacob Hutton	Kirksville	MO	Christian Schlotman	Adrian	MO
Stephen Jones	Kansas City	MO	Tyler Simpson	Basehor	KS
Phillip Klassen	Kansas City	MO	Kylynn Sisk	Forest City	MO
Johnathon Knopp	Platte City	MO	Blaine Steiner	Maysville	MO
Wyatt Long	Maryville	MO	Austin Walker	Parkville	MO
Scott Maltsberger	Maysville	MO	Dalton Welch	Parnell	MO
Tylor McDonald	Maryville	MO	John Wiese	Amazonia	MO

As Hegemon, my goal is adopt the principals of the Grand Chapter and truly make these new member candidates better men for a better world. Poor study habits that result in poor grades is the main reason that guys drop out of school and can't continue their time in TKE.

My goals for this semester are to help all of these new members to achieve scroll by earning a 2.5 GPA this semester and stay in the fraternity for the remainder of their college years.

My second goal is to educate these men on the ways of the fraternity, and the ways of being a gentleman. This will help continue to contribute to the fraternity while at NWMSU and then go on to apply these skills after college.



Our chapter's great strength is in the traditions we hold. We plan to continue this by teaching these men the traditions, rituals and songs that many of you still hold dear many years later. Our new member training is designed to help educate and mold these new members into good TKE's and well respected men.

The new member trainers and I are teaching them how to study with extensive daily study hours at the TKE house. We also work on educating them on the basic life skills like how to tie a tie, fixing a flat tire, proper cleaning and maintenance and prepare a personal budget.

Each week, we will have a different theme and a different life lesson that needs to be mastered and applied. These themes include: leadership, philanthropy, house work, brotherhood, respect, social and knowledge and history of TKE and Delta Nu. These lessons and activates will help these new members come together and build a bond that will stay with them a lifetime.

Y.I.T.B., Nate Beaver, 1552, Hegemon - Fall 2012 - S504404@mail.nwmissouri.edu

Alumni and Housing Committee Treasurer’s Report – Chris Holder, 1362

Fraters, as we enter the second half of 2012, here is the status of the accounts.

Alumni Assn. Account

Alumni Association 2012 Balance	\$11,725*
(*\$9,700 of this cash prepaid dues for future years)	
Capital Improvements (Short-Term): v	\$6,582
Capital Improvements (Long-Term):	\$4,950
Fire Fund Precedes Remaining	\$6,256
Total:	\$29,513

Housing Account

Property Checking Account:	\$28,990*
(with about 40% of the rent and parlor fees collected to date)	
Property Security Deposits:	\$10,800
Property Savings Account	\$13,694
Total:	\$53,484

Y.I.T.B., Chris Holder, 1362, Treasurer-Alumni and Housing Committee Chris67_99@yahoo.com

Composite Resurrection Project - Bob Nielsen, 640,

Recent physical contributions to be showcased in the house include a vintage TKE blazer donated by Richard V. Schmitz, 224, along with a commemorative 1964 RCB favor, a pledge paddle and Frater Ed Propst, 276, donated a hand carved wooden crest. All are to be hung in the house this spring.



Frater Hal Martens is continuing his efforts of converting The TOWER – into TKE photos for framing and display in the house. We plan to catalog the items of historical value and map their locations in the house. The photo to the left is the TKE blazer that will be delivered before Homecoming and on permanent display in the house.

REQUEST: If you were in the chapter from 1983 to 1990, we are looking for mini composites. We need the following years: 83-84, 85-86, 87-88, 88-89 and 89-90.

Please look through those boxes and other places of storage and see if you can find any of these missing composites. Please contact me and we can make arraignments to cover your mailing costs. We scan for enlargement and to create a replacement composite to be displayed in the house. We will return the original composites and If you have items for permanent display, please contact me before you mail them.

Y.I.T.B., Bob Nielsen, 640, Chairman, Composite Resurrection Project nielsenbd1@yahoo.com

TKE Delta Nu On-Line Museum – Rich Reetz, 650

At the Rededication last spring Fraters Shelton and Moss brought to my attention a couple of scrapbooks from the 80s that I have finished scanning and uploading. All those who matriculated with Frater Moss will be able to relive a lot of memories. Please pass the word on to those fraters from his era. The scrapbook was scanned page by page and not as individual photos because they also contain written captions. A lot of pictures of Daughters of Diana functions as well.

Another scrapbook has pictures of the ole' 222 W. Cooper house post "Inferno" and have been posted. I also received a video of a walk through after the 1996 tragedy and it is uploaded with a soundtrack to add drama. Those photos and videos as well as many more, can be viewed at- <http://rjtrphoto.smugmug.com/Delta-Nu-TKE>

We encourage any Delta Nu TKE, wife, Daughter of Diana or offspring to pull up a chair and come by for a visit.

Traffic to the sight is down recently, but we plan to introduce many new pictures over the coming months so please visit us often to see what is new. I still would like to encourage anyone with photos from the past/present/future to submit them so we all can share the memories.

Y.I.T.B., Richard Reetz, 650, Museum Curator 323-633-3175 rjtr@sbcglobal.net

Delta Nu Alumni Association – Brad Shelton, 651

As we all turn the page on our calendars to a whole new school year, it's natural to spend some time reflecting on where we've come from and where we're going. While some years blur together like passing scenery from a car window, others are so memorable that their life-changing significance can be felt like shock-waves emanating out through subsequent years.

This passing of time may have made us wiser (and sadly older), but there will always be countless lessons to learn. For all the challenges we conquer, the challenge of keeping up with all these learning lessons may be the greatest. What's heartening to know is that we can still relish in the child-like "aha moment" we feel when we discover a better way of doing things or the perfect solution to a plaguing problem.



One lesson we've probably all learned the hard way is to diligently back-up our digital domains and keep up with our Frater contacts. From photos to documents to the friends you have made, they have or will last a life time. We've all experienced the panic of losing our important files and friends. With life passing by so quickly, it's more critical than ever to document the memories and experiences that pepper our personal and fraternal lives. Now would be a good time to archive all those event photos, portfolio materials and inspirational notes that are haphazardly flying around your house. And we are here to help! We are asking you to dig thru that attic or storage boxes and find those pictures of you 50 years or 5 years ago and send them to us. We will scan and load them onto the web site and return the originals to you. After all, what would the future be worth without the past for context and reference? Not to mention all those learning lessons.

Big thanks to all 184 of the current members of the Delta Nu Alumni Association for your support during these last three years! As a way of giving thanks, we have sent individual emails to more than 675 Fraters on or near their birthday offering them a choice of a print of any of the 3 Delta nu Houses. We have had more than 130 take us up on that gift offer. This type of program as well as the newsletter, the funding of the web site and on line museum, the postage and general operating costs associated with the Board of Advisors and Alumni Association is where your dues are spent. If you would like to receive a copy of the budget for 2012 or a list of expenses to see how we spend the dues, contact me at the email address below. Please plan to join us at the annual DNAA membership meeting in Kansas City on March 3, 2013

If you have not joined the DNAA and want to see a current list of the dues paying members of the Delta Nu Alumni Association, please go to <http://www.nwtke.com/content/delta-nu-alumni-association-roster>

To update your contact information please log on to: <http://www.nwtke.com/content/tke-AlumniUpdate>
 For more information on the Alumni Association log on to <http://www.nwtke.com/content/alumni-association/> and look for the **Join Now** JOIN button or contact Brad Shelton below. Non-tax deductible donation dues can be paid online or you can mail a check to: Delta Nu Alumni Association, 1805 Arabian Ave, Naperville, IL 60565. We have come a long way but there is still more to do. Here's to looking back and moving forward.

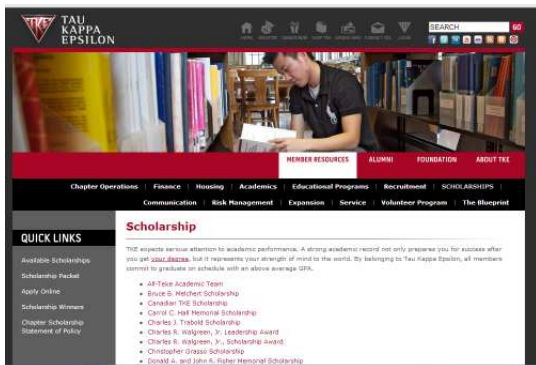
Y.I.T.B., Brad Shelton, 651, TKE Delta Nu Alumni Assn. Membership Director brad.shelton@nwtke.com

SCHOLARSHIPS AND FUNDS

2012 TKE Scholarship for Delta Nu Active Members, Dave Teeter, 901,

EXCITING CHANGE TO ACTIVE SCHOLARSHIP PROGRAM

The Active Scholarship/Special Projects Education fund chairs have decided to do some alterations to the



Active's scholarship program (starting with this spring's application period) in order to reward more than one frater that has excelled academically thus far in their college career. The goal is to award any active member that has committed to live in the TKE House for the upcoming academic year, attained at least a 3.0 cumulative GPA, and be a member in good standing per chapter President. It will be a set amount determined by the fund chairs to be split among those that meet the eligibility standard. For example, this past year we would have had 5 active members that met this standard this year and if we used the amount of \$1,000, each would get \$200. It would be

credited to their student account from the Northwest Foundation which administers this fund through the University.

The reasoning for the change is to reward any member that has made a commitment to be a part of living in the TKE House, maintaining and setting the example of good scholarship while a member and to also help in some way show appreciation of their commitment to our chapter. We currently have a balance of \$7,100 in the Fund and had 3 donors to the fund this last year. The challenge will be to raise additional funds to replenish and build the fund's balance so as to increase the per year allocation! Look for our plans to increase funding in this area and some interesting ways to raise the necessary funds to make this a perpetual!

The next scholarship due date for the 2013-14 academic year will be February 1, 2013 for all actives that meet the criteria set forth in the application. The selection will be made in June once the School year GPAs have been posted. Please encourage any and all actives next year to apply for this excellent opportunity to help defray the expenses of their education. For more information, please contact Fund Manager and Selection Committee coordinator Dave Teeter.

Y.I.T.B., Dave Teeter, 901, Fund Manager and Selection Committee coordinator, dteeter@mc-wildcats.org

**2012 Peter J. Greve Memorial TKE Alumni Scholarship, Bruce Barlow, 533, tkedn533@comcast.net
PETER J. GREVE MEMORIAL TKE ALUMNI OF NORTHWEST MISSOURI STATE UNIVERSITY SCHOLARSHIP**

Now into its fifth year the PJG Scholarship continues to fulfill Pete Greve's vision of helping deserving high school seniors experience college life at Northwest Missouri State University. As you may recall, last year's fundraising was canceled due to the house fire, yet for the first time two high school seniors were awarded scholarships. The fund continues to grow but now more than ever could use your donation to continue towards the goal of becoming self-sustaining.

Pete's vision has come full circle as one of this year's recipients, Wyatt Long, is a member of the Delta Nu Fall 2012 pledge class. Wyatt grew up in the Maryville area; as a high school scholar tutored elementary through high school students; and is an all-state football player in three positions. We are excited that Wyatt has found a new home at the TKE house; Good Luck, Wyatt!

By pledging TKE, Wyatt is the first to complete Pete's hope. Though being male and pledging TKE is not a requirement of the PJG Scholarship, it was Pete's hope that by awarding scholarships to deserving high school seniors, the young men would become TKE fraternity members before going out and contributing to life and society.

All of this has been accomplished by the efforts of the Delta Nu Chapter. Wyatt was nominated by a Delta Nu Alum; he was selected by a committee of Delta Nu alums; and the scholarship is funded by contributions from Delta Nu alum and friends. Due to the aforementioned reasons, this unique and heartwarming scholarship fund needs your financial support to ensure its success. So, please think of the Peter J. Greve Memorial TKE Alumni of Northwest Missouri State University Scholarship when making donations or planning your year-end giving. For additional information on the Peter J. Greve Memorial TKE Alumni of Northwest Missouri State University Scholarship, please contact Bruce Barlow.

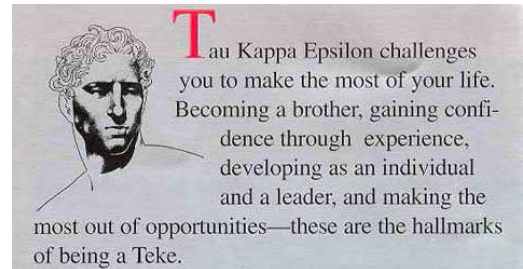
Y.I.T.B., Bruce Barlow, 533, Alumni Scholarship Chairman tkedn533@comcast.net.

Philanthropic Committee - Brian Carroll, DN 1354

The Philanthropic efforts are going very well at Delta Nu due to the work of the fund managers, Bruce Barlow and Dave Teeter. We currently have an opening for the Special Projects Fund Manager. For more information on how you can get involved, please contact me at the email below. Much has been accomplished this year but there is still quite a bit to do. We want to build the cash reserves in the Peter J Greve Scholarship Fund, the TKE Scholarship Fund and the Special Projects Fund. While all funds have a balance sufficient to award the scholarships this year, we will need to step up our efforts to raise those balances in 2013.

We want to thank all those that have contributed to the Fire Fund, and have made the renovations to the house possible. If you have not been able to see pictures or visit the house in person I recommend that you take a few minutes and visit the website and look at the renovations. This was only possible from the continued support of the Alumni and their financial donations. There are still opportunities to participate in ongoing projects at the house and we appreciate your consideration and the continued support to our Fraternity.

I encourage all of you to become involved and to join the Delta Nu Alumni Association. If you are interested in getting more involved, serving on the BOA or nominating someone for a position on the BOA, please contact Mark Witthar at mwitthar@ford.com



To find out more information or to donate to any of the funds, in addition to the Fire Recovery Fund, please visit www.nwtke.com, click on the Alumni tab and then on Donation Opportunities. You can also mail a check to: Delta Nu Alumni Association, c/o Brad Shelton, 1805 Arabian Ave, Naperville, IL 60565

Special Projects Fund through the Teke Education Foundation – Open

Donations to the TKE Education Foundation (TEF) in 2012 can be directed to the Delta Nu Special Projects Fund. Donors can designate up to 100% of their donation to the Delta Nu Special Projects Fund which allows the Delta Nu BOA to use this money for educational purposes like Conclave, Regional Leadership Conferences or other approved educational expenses.

Donations can be made to <http://www.nwtke.com/content/special-projects> and your tax deductible donation will be sent to TKE National or you can donate directly to TKE National's website at www.tke.org. Please consider designating some part of your donation to the Delta Nu Special Projects Fund specifically. This leaves the current fund balance of just over \$1,750. Our goal for 2012 is more than \$3,000 in the fund balance by December 2012.

We would like you to help us reach our goal of more than 20 Delta Nu donors' participation in the TEF and DN Special Projects Fund in the 2012-2013 school year. Look for more announcements on fund raising efforts later this year and continue to visit the website for more on philanthropic opportunities and other ways that you can be involved.

Y.I.T.B., Brian Carroll, 1354, Philanthropic Committee Chairman, brian-carroll-1354@hotmail.com

TKE "Did You Know?" – Dennis Cox, 659

Did you know.... Facts about the International Fraternity Tau Kappa Epsilon Fraternity

- Founded on January 10, 1899 at Illinois Wesleyan University in Bloomington, Illinois.
- More than 257,000 men have been initiated into the bond of Tau Kappa Epsilon.
- 291 active chapters and colonies located throughout the United States and Canada.
- Governed by its Grand Chapter, which meets in biennial Conclaves to elect a Grand Council and revise or amend The Black Book (the International Constitution and Bylaws). The Grand Chapter is primarily made up of undergraduates.
- The Grand Council governs the Fraternity between Conclaves.
- 30 full-time employees on the professional Fraternity Staff. Thousands volunteer as unpaid staff.
- Tau Kappa Epsilon publishes a quarterly magazine titled The Teke.
- The Fraternity staff is supported by key volunteers who provide their time, talent and treasure throughout the TKE Nation. They include: Grand Province Advisors, Province Advisors and other leaders.
- Conclave is this summer in Washington DC in early August, 2013

Y.I.T.B., Dennis Cox, 659, dennisc@northwestmissouri.com

Social Committee Report – Kevin Kemmerer, 648



Following a highly successful weekend in early June featuring the Annual Delta Nu Memorial Golf Tournament and the Re-dedication of the House, the Association looked forward to supporting the Chapter in the new school year. Our first event was the co-sponsoring along with the Kansas City Chapter of the Northwest Alumni Association, a happy hour at “The Well” in Kansas City. This event was a prelude to the following day’s Bearcat vs. UCM football game in Warrensburg. A nice size crowd

attended with Alumni Fraters from several eras represented.



The Annual Northwest Family Weekend took place on the weekend of September 28-30. The Association had asked the Active Chapter to coordinate a Fraternity oriented events during the weekend, and this was an excellent opportunity to see the newly remodeled House which is easily the finest on Campus.

The always popular Fall Classic between our Northwest Bearcats and the Pittsburg State Gorillas will take place on October 13th @ 4:00 @ Arrowhead Stadium in Kansas City. As has become tradition, there will be tailgating including both Actives and Alumni prior to the game. Fraters Dan Canchola and Ron Beaver will be in charge and it will be a BYOS, Bring Your Own Stuff, event. There will be grills and a tent available for you to bring whatever tailgating favorites you choose. Of course there will be plenty of Camaraderie and the chance to share a cold beverage or two in preparation for cheering our Bearcats against the defending Division II National Champions. The annual Homecoming weekend is a little later than usual this year as it takes place on November 3 at 2:00.

Again, we have encouraged the Active Chapter to organize any festivities with The Alumni Association taking more of a backseat in supporting their efforts. The feeling was that both Family Weekend and Homecoming should be opportunities for the recently named Top TEKE Chapter to shine and show off the House and the incredible amount of momentum that has been built over the last couple of years including coming back so strong from the fire last year. If you plan to attend Homecoming weekend, I encourage you to be sure to take time to go by the House either Friday evening or throughout the day on Saturday.



Monthly Get Togethers

We continue to have a standing monthly get together for the Kansas City Fraters. We gather on the second Wednesday of each month @ 5:00 @ Tanner’s in Overland Park, KS. Tanner’s is located at 69 Highway & 119th Street and we would love to have some new faces join us. No RSVP is necessary, just show up.

Help


I also would love to visit with any Fraters in other geographical areas that would consider being simply a point person or contact to help organize gatherings similar to the one in Overland Park or any other social events. Our whole intent is to continue to strengthen those sturdy chords of Fraternal affection. Anyone interested can contact me, Kevin Kemmerer, #648 @ 913-579-5941, by email below or on the Delta Nu page on Facebook.


Looking Ahead

Here are the plans for other Social events. Watch for details of upcoming events such as, The Fall classic at Arrowhead on October 13th, Homecoming, November 3rd and more. On the 2nd Wednesday of each month we have a TKE Get Together at Tanners located at 119th Street & 69 Highway in Overland Park, Kansas @ 5:00. This is a standing time and no RSVP is needed. All Fraters in the area are encouraged to attend.

Y.I.T.B., Kevin Kemmerer, 533, Social Chairman, kkemm98880@aol.com

Social Calendar for the next 2 months

October						
S	M	T	W	T	F	S
30 Sept	1	2	3	4	5	6
7	8	9	10	11	12	13
		Order Rah Jacket	KC 5pm Tanner's			Fall Classic
14	15	16	17	18	19	20
21	22	23	24	25	26	27
28	29	30	31			
		 Week 9/28 – 10/3				

November						
S	M	T	W	T	F	S
				1	2	3
						Homecoming
				 Week 9/28 – 10/3		
4	5	6	7	8	9	10
11	12	13	14	15	16	17
		KC 5pm Tanner's				
18	19	20	21	22	23	24
25	26	27	28	29	30	

TKE Delta Nu group on Facebook



As of mid-May there are approximately 285 alumni and actives connected through the TKE Delta Nu group at Facebook.com. Using the search bar at the top of any Facebook page, type TKE Delta Nu to find our group page. This is a “members only” page dedicated to alumni or active TKE Delta Nu Fraters. This way we are free to openly engage in dialogue not seen by non-TKE friends, family and co-workers. Feel free to upload old pictures. It’s fun and engaging!

We also encourage you to join the Alumni Association to reconnect with lost Fraters and alumni.

IN MEMORIAM

As we become aware of Fraters who have passed into The Chapter Eternal, we will continue to update our records. If you know of other Fraters that may have passed away or if we have listed here by mistake, please let us know by contacting brad.shelton@nwtke.com or call Brad Shelton, 651, at (630) 416-9924.

If you'd like to make a donation to their memorial fund to help memorialize them with a brick on the Dick Wiles TKE of Life Donors wall, please contact us. Once a fund reaches \$500, a brick with the Frater's name will be placed on the wall. Below is the full list of memorial funds without a brick with their current values.

CHAPTER ETERNAL

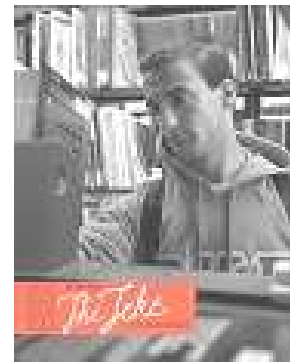
Since our last newsletter we have become aware of 3 Delta Nu Fraters who have entered the Chapter Eternal. They are listed below. Please keep these Fraters and their families in your thoughts.

SCROLL	NAME	BIRTH YEAR	GRAD YEAR	PLEDGE CLASS	CHAPTER ETERNAL DATE
22	Marshall B. Hatfield	1925	1954	1954 Spring	April 26, 2012
223	Billy D. Scott	1931	1953	1956 Fall	May 11, 2012
230	Ronald R. Zimmerman	1942	1965	1961 Spring	May 24, 2012

To view Fraters that entered the Chapter Eternal, go to <http://www.nwtke.com/content/chapter-eternal>

DELTA NU TEKES IN THE NEWS

The Teke Magazine published this spring mentioned the Delta Nu Chapter on pages, 18, 21, 40, 52 and 62. The summer volume had several references to Delta Nu as one of 15 Top Teke Chapters in US and Canada. http://www.tke.org/files/file/the_teke/2012-spring.pdf



To receive the NWMSU alumni Magazine, make a donation to either the Pete Greve or TKE scholarship funds and you will automatically receive the magazine. In order to receive The Teke magazine, simply make a donation to the Teke Educational Foundation (TEF) and specify your donation to go to the Delta Nu Special Projects Fund. Some TKE highlights can be found in the newest edition of Northwest Magazine.



TKE is honored to have had two Delta Nu alumni that were honored at the 2012 annual Northwest Alumni Awards Banquet. Frater Dan Runde '81 was honored with the Turret Service Award and Frater Ed Farquhar '58 was honored with the Distinguished Emeritus Faculty Award. (14) Also, Frater Russ Northrup, served as master of ceremonies. Past TKE recipients of Northwest Alumni Awards include:

- | | | |
|---------------|------------|---------------|
| Richard Wiles | Don Beeson | BD Owens |
| John Moore | JD Hammond | Russ Northrup |

You might also like to view the article and photo about the re-opening of the TKE house. (18)

Two TKEs are being honored by their families through educational funds. Jeremy Barlow'03 was remembered by the Jeremy Barlow Memorial Music Scholarship for NWMSU students that his widow established. (21)

NWSU announced that the Leon F. Miller Graduate Grant Award will continue in his honor due to the generosity of his daughter. (23)

Former Chapter Advisor Coach Mark Rosewell earned his 900th career win in April. As the article stated "his legacy extends beyond tennis" as we Delta Nus well know. He was one Chapter Advisor for several years. (25) Frater Joel Gordon's wedding is mentioned on page 36 and pages 37-38 mention Marshall Hatfield, B.D. Scott and Ron Zimmerman are listed In Memoriam. <http://www.nwmissouri.edu/alumni/magazine/index.htm>

Frater Locator

Are you interested in finding fellow TKEs who live near you? Do you wonder where someone you've lost track of is living these days? Then try out the Delta Nu Member Search, only on the Delta Nu website!

Click on this link: <http://www.nwtke.com/alumni/membersearch> or go to www.nwtke.com and click on the **Alumni** tab and then on the **Frater Search** tab. All you need for access is your registered log in (username and password). To register, go to www.nwtke.com and click on the **Website Registration** tab on the right side. On this page, there are instructions for you to use or print off. (a Word document is attached at the bottom of the page).

2012 Alumni/Active Work Weekend Co-Chairmen Ed Hansen, 619, Brian Lohafer, 564, and Craig Poldberg, 761



The Alumni Work Weekend is planned for May 18, 2013. We are still in the planning stages for this event to make sure the house is ready to showcase at the Golf tournament on May 31, 2013. The work weekend date is tentative as we won't know the project list until later in the school year.

Y.I.T.B., Work Weekend Co-Chairmen Ed Hansen, 619 ed.hansen@o-mschools.org, Brian Lohafer, 564 blohafer@usd458.org, and Craig Poldberg, 761 cpoldberg@msn.com

TKE Rah Rah Jackets !

Order by October 10th to insure delivery in time for Christmas.

As we mentioned in a previous Delta Nu Review, the Rah Rah is making a comeback at Northwest Missouri State University. They were worn proudly by many Delta Nu Tekes from the 1950's through the mid 1980's and now the undergrad chapter is showing signs of wanting to bring these jackets back for an encore performance. Finally something all can agree on!



If you are interested in purchasing a TKE Rah Rah, please contact Alumni Frater Steve Moss at: semoss@socket.net or call 573-489-5029 to order by phone.

The cost of the jacket is \$150 + \$12 for shipping if necessary.

Sizes available include: Adult S, M, L, XL, 2XL, 3XL

MEASURE IN INCHES	S	M	L	XL	2XL	3XL	4XL
SLEEVE	33-35	36-38	36.5	37.25	38	38.5	40
SHOULDER	24.5	25	25.5	26	26.5	27	28
BACK	27	27.5	28	28.5	29	29.5	30
WAIST	30	32	34	36	38	39	40
CHEST CIRCUMFERENCE'	50*	52*	54*	56*	58*	60*	62*
CUFF	3.25	3.5	3.75	4	4.25	4.25	4.25
APPROX. WEIGHT	125 LBS	145 LBS	175 LBS	200 LBS	230 LBS	260 LBS	275 LBS

If you order by October 10th, your jacket can be ready for Christmas!

The Rah Rah webpage is <http://www.nwtke.com/content/tke-rah-rah-jackets>

Lost Fraters

Below are the 210 Lost Delta Nu Fraters by scroll number. We do not have any contact info for these men. If you have an email or current address, please contact Brad Shelton with the details.

SCROLL	FULL NAME	PLEDGE CLASS	BIRTH YEAR	GRAD YEAR	SCROLL	FULL NAME	PLEDGE CLASS	BIRTH YEAR	GRAD YEAR
3	Richard D. Pistole	1954 Spring	1933	1956	259	Dennis E. Dinkla	1962 Spring	1943	1965
4	Daniel T. Relmond Jr.	1954 Spring	1928	1953	260	Darryl L. Fryer	1962 Spring	1942	1965
23	Bernard E. Hatton	1954 Spring	1929	1955	262	Robert F. Hall	1962 Spring	1943	1965
24	Jack R. Hill	1954 Spring	1933	1957	265	Rex O. Kenyon	1962 Spring	1943	1965
28	Martin F. Maune Jr.	1954 Spring	1931	1957	266	Larry W. Kirby	1962 Spring	1962	1964
30	J. W. Stone	1954 Spring	1927	1956	268	George M. Lee	1962 Spring	1962	1965
47	Gerald D. Bryant	1955 Spring	1936	1958	271	Merlin A. Messner	1962 Spring	1943	1965
54	Missing	1955 Fall			285	Rollin E. Watters	1962 Spring	1943	1965
60	Robert R. Myers	1955 Fall	1937	1959	286	John A. Bennett	1962 Fall	1943	1966
69	Daryl E. Kluever	1956 Fall	1937	1961	289	Jay K. Boettner	1962 Fall	1943	1965
70	James R. Marley	1956 Fall	1938	1960	297	Charles A. Nelson	1962 Fall	1943	1965
82	John A. Williams	1956 Fall	1937	1959	300	James H. Tally	1962 Fall	1941	1965
90	Frederick W. Joyner	1957 Spring	1938	1960	302	William A. Caldwell	1963 Spring	1941	1966
92	Gary G. Smith	1957 Spring	1937	1960	308	Dennis J. Loring	1963 Spring	1942	1965
105	Carl V. Long	1957 Fall	1939	1961	314	Gerald M. Brown	1963 Fall	1943	1967
108	Don H. Vaudt	1957 Fall	1938	1960	336	Darryl D. Hankins	1964 Spring	1943	1965
114	Robert W. Hickman	1958 Spring	1935	1965	341	Walter M. Johnson	1964 Spring	1944	1967
117	Nossarat A. Shilatifar	1958 Spring	1934	1960	346	Edward W. Locker	1964 Spring	1943	1967
122	Bernal D. Brock	1958 Fall	1935	1962	352	Henry E. Ross	1964 Spring	1944	1967
126	Henry F. Nowak	1958 Fall	1934	1962	357	John P. Demaio	1964 Fall	1944	1968
127	Michael J. Podshadley	1958 Fall	1940	1962	363	Alberto F. Rodriguez	1964 Fall	1945	1967
129	Harry L. Slaughter	1958 Fall	1940	1963	380	Jimmy L. Phillips	1965 Spring	1946	1968
132	John Roger Anderson	1959 Spring	1939	1961	383	J. B. Watsabaugh Jr.	1965 Spring	1943	1967
134	Donald R. Barrett	1959 Spring	1940	1963	386	Dennis A. Wood	1965 Spring	1946	1971
135	Ronald J. Bergsten	1959 Spring	1941	1962	389	Ronald L. Bailey	1965 Fall	1946	1972
136	G. S. Brown	1959 Spring	1940	1963	393	Dallas C. Hopkey	1965 Fall	1945	1968
142	Don M. Gamble	1959 Spring	1940	1962	399	Alan T. Twigg	1965 Fall	1944	1967
149	Lloyd E. Maple Jr.	1959 Spring	1938	1962	402	Robert L. Walker	1965 Fall	1945	1968
155	Robert P. Ross	1959 Spring	1936	1960	405	Robert S. Cline	1966 Spring	1947	1970
160	William M. Sparks	1959 Spring	1940	1963	408	Joe A. Davis	1966 Spring		1973
161	William H. Trimble	1959 Spring	1940	1962	411	Lawrence E. Earhart	1966 Spring	1947	1969
163	Lloyd L. Walker	1959 Spring	1939	1961	412	William L. Edison	1966 Spring		1970
166	Jerry M. Hawk	1959 Spring	1939	1962	419	Thomas G. Kremer	1966 Spring		1969
171	Ronald D. Anderson	1959 Fall	1934	1968	422	Roderick A. Musch	1966 Spring	1947	1971
175	Ted J. Herman	1959 Fall	1940	1962	423	Michael G. Myers	1966 Spring	1947	1969
182	William H. Simpson	1959 Fall	1936	1962	427	Patrick M. Sellers	1966 Spring	1947	1969
183	Giles G. Walter	1959 Fall	1940	1963	435	Dayle E. Erickson	1966 Fall	1944	1970
184	Charles C. Woodring	1958 Fall	1937	1963	437	Darwin E. Johnson	1966 Fall	1946	1968
186	Lawrence S. Bundy	1960 Spring	1939	1963	443	Tom A. Chandler	1967 Spring	1942	1973
188	Stephen L. Corrigan	1960 Spring	1940	1962	448	Thomas D. Dodge	1967 Spring	1947	1970
189	Gary D. Cunningham	1960 Spring	1941	1963	451	Thomas M. Gilbreath Jr	1967 Spring	1948	1970
192	Jerald L. Putnam	1960 Spring	1939	1963	454	Don R. Jones	1967 Spring	1948	1970
197	Terry F. Lunders	1960 Fall		1900	462	John R. Roesle	1967 Spring	1947	1970
198	Robert E. Ciine	1960 Fall		1900	467	Tracy W. Witt	1967 Spring	1948	1971
206	Jan H. Houck	1961 Spring		1900	479	Craig Carr	1968 Spring		1972
209	Patrick R. Boyd	1961 Spring	1942	1965	487	Harold A. Gooding Jr.	1968 Spring	1947	1971
215	Matthias G. Grumann Jr	1961 Spring	1942	1964	490	Phillip E. Hestand	1968 Spring	1949	1971
237	Stephen D. Drake	1961 Fall	1942	1964	502	William J. Byrne	1968 Fall	1948	1973
240	Terry L. Lewis	1961 Fall	1941	1969	503	Wilbur E. Cleaver	1968 Fall	1948	1973
242	Norman G. Seippel	1961 Fall	1939	1963	511	Randy A. Porter	1968 Fall		1970
244	Stanley I. Allan	1962 Spring	1943	1965	517	Daniel V. Leighninger	1969 Spring	1948	1971
258	John J. Dill	1962 Spring	1939	1965	535	Steven L. Clouse	1970 Spring	1951	1973

More of the 210 Lost Delta Nu Tekes

SCROLL	FULL NAME	PLEDGE CLASS	BIRTH YEAR	GRAD YEAR	SCROLL	FULL NAME	PLEDGE CLASS	BIRTH YEAR	GRAD YEAR
537	Antero Espino	1970 Spring	1948	1973	1041	Scott W. Ginkens	1987 Spring	1968	1989
550	Mike D. Schuler	1970 Spring	1950	1972	1049	David Ebright	1987 Fall	1968	1990
561	Marc P. Courtney	1971 Spring	1952	1974	1054	Brian Ringgenberg	1987 Fall	1969	1989
572	Patrick A. Campbell	1971 Fall	1953	1976	1057	Michael Menke	1988 Spring	1968	1989
574	Dennis L. Cooney	1971 Fall	1952	1974	1062	Pat Martin	1988 Spring	1969	1989
587	John R. Novak	1971 Fall	1950	1973	1068	Marc Stith	1988 Fall	1969	1989
590	Beau J. Timberlake	1971 Fall	1953	1975	1072	David Hestand	1988 Fall	1968	1989
592	Phillip S. Davidson	1972 Spring	1953	1975	1075	Marcus Henry	1988 Fall	1969	1989
594	Stuart Jenkins	1972 Spring	1952	1974	1081	Michael K. Gooding	1988 Fall	1970	1992
595	Jerry Kulczewski	1972 Spring	1953	1976	1089	Eric R. Rammelsburg	1988 Spring	1967	1990
598	R. Michael Smittle	1972 Spring	1953	1976	1090	Jon T. Denney	1988 Spring	1969	1989
599	Darl Stavick	1972 Spring	1952	1975	1093	Steven G. Thomas	1988 Spring	1968	1989
635	Bill Althaus	1973 Fall	1953	1976	1094	David L. Bushner	1988 Spring	1969	1993
661	Douglas C. Deskin	1974 Spring	1954	1977	1095	Danny Huddart	1988 Spring	1969	1989
692	Steve Humphrey	1975 Spring	1955	1982	1096	Jason R. Wilson	1989 Fall	1971	1990
724	Jay Cherry	1976 Spring	1956	1979	1099	Rusty Rich	1989 Fall	1971	1992
755	Gregory E. Felumb	1977 Spring	1957	1980	1107	Sean A. Smith	1990 Spring	1971	1991
762	Jeffery G. Potter	1977 Spring	1958	1980	1116	Wade A. Miller	1990 Fall	1972	1991
768	Robert Sawicki	1977 Fall	1956	1978	1139	D. Sam Sellers	1990 Fall	1969	1995
790	Kelvin L. Moore	1978 Spring	1959	1981	1141	Shannon L. Alford	1991 Spring	1970	1991
798	Kevin Scott	1978 Spring	1958	1980	1183	Tyler R. Hendershot	1992 Spring	1973	
809	H. Jay Nielsen	1979 Spring	1959	1980	1188	John A. Shipley	1992 Fall	1974	1994
817	Carl C. Jensen	1979 Spring	1959	1982	1196	Michael D. Edge	1992 Fall	1971	
825	James R. Wilson III	1979 Spring	1958	1981	1200	Gary D. Eastep	1992 Fall	1974	
830	Jack R. Bentley	1979 Fall	1959	1980	1201	Robert A. Purviance	1992 Fall	1974	1993
831	Larry Gaer	1979 Fall	1960	1982	1203	Bill L. Pearman	1993 Spring	1974	1994
846	Dan Adams	1980 Spring	1961	1983	1205	Andrew C. Straight	1993 Spring	1972	1993
849	Kenneth Elliott	1980 Spring	1960	1982	1238	Ryan L. Allen	1994 Fall	1975	
854	Robert L. Bice Jr.	1980 Spring	1959	1981	1250	David M. Schumacher	1995 Fall	1977	
863	James C. Gingrich	1980 Fall	1961	1982	1266	Zachary D. Perry	1995 Fall	1977	
864	W. Matt Grace	1980 Fall	1962	1984	1269	Stanley C. Dunkle	1995 Fall	1977	
867	Daniel B. Marin	1980 Fall	1962	1982	1271	Thomas N. Thompson Jr	1996 Spring	1975	
876	Michael L. Marin	1980 Fall	1961	1982	1274	Jeremy N. Sullivan	1996 Spring	1977	
878	Lynn M. Volmer	1980 Fall	1962	1985	1289	Warren L. Hughes	1996 Fall	1975	
887	Doug Thomas	1981 Spring	1958	1982	1291	Adam J. Petersen	1996 Fall	1978	
889	Charles P. Espinosa	1981 Spring	1960	1982	1322	Kurtis W. Neely	1998 Spring	1978	
908	Casey G. Connor	1982 Fall	1962	1986	1331	James R. Sampson	1998 Fall	1979	
911	Kevin Wells	1982 Fall	1982	1988	1380	Steven A. Shaw	2000 Fall	1982	
929	Stacy Pierpoint	1983 Spring	1964	1984	1382	Miles R. Lutterbie	2000 Fall	1982	
938	Mike M. Karch	1983 Spring	1964	1986	1387	Michael D. Welch	2000 Fall	1981	2004
942	Eugene W. Coit Jr.	1983 Spring	1962		1389	Josh J. Bogus	2000 Fall	1982	
948	Mfon Umoren	1983 Spring	1963	1988	1391	Ben M. Peters	2000 Fall	1982	
950	David Martin	1983 Spring	1964	1984	1413	Bo Brown	2002 Fall	1982	2007
955	Todd Huntley	1983 Fall	1963	1985	1419	Ben Green	2002 Fall	1982	
959	Paul Holstine	1983 Spring	1964	1984	1437	Joshua Zolotor	2004 Fall	1986	
966	Todd McCandless	1984 Spring	1965	1984	1460	Patrick McDonald	2005 Spring		2008
975	Roger Merschman	1984 Spring	1964	1986	1461	David Lewey	2005 Fall	1986	2009
979	David W. Capps	1985 Spring	1965	1989	1481	Matthew Ellison	2006 Fall	1986	2010
1007	William B. Heckman	1986 Spring	1966	1986	1485	Steven Bush	2006 Fall	1988	2009
1017	Mark A. Julius	1986 Fall	1967	1988	1500	Bayo Gludaja	2006 Fall		
1018	Clayton C. Koonce	1986 Fall	1967	1988	1506	Seth Wade	2007 Fall	1988	2011
1036	Grant R. Goins	1987 Spring	1965	1988	1529	Reggie Freese	2008 Fall	1989	2012
					1543	Nathan Stork	2008 Fall		

BOA Organizational Chart and Roles

*Denotes member of BOA

Housing Corporation

*Chairman – Mark Witthar, DN 853	mwitthar@ford.com	Term Expires: Feb 2015
*Treasurer – Chris Holder, DN 1362	chris67_99@yahoo.com	Term Expires: Feb 2015
*Alumni Property Manager – Carson Riedel, DD 200-937	csgmaryville@hotmail.com	Term Expires: Feb 2014
*Chapter Advisor – Matt Johnson- NWMSU Teacher	Johnson@nwmissouri.edu	Term Expires: July 2013

Delta Nu Alumni Association

*Membership – Brad Shelton, DN 651	brad.shelton@nwtkc.com	Term Expires: Feb 2013
*Corresponding Secretary – Merle Jones, DN 541	merlehwk@verizon.net	Term Expires: Feb 2014
*Recording Secretary – Brent Steffens, DN 1384	mrbrentsteffens@hotmail.com	Term Expires: Feb 2014
*Communications Committee – Steve Moss, DN 927	semoss@socket.net	Term Expires: Jun 2015
*Philanthropic Committee – Brian Carroll, DN 1354	brian-carroll-1354@hotmail.com	Term Expires: Feb 2014
*Capital Improvement Committee – Open		Term Expires: Feb 2013
*Events Committee – Kevin Kemmerer, DN 648	kkemm98880@aol.com	Term Expires: Feb 2014
*Member at Large, Special Projects – Open		Term Expires: Feb 2015

Open Board Positions

The Board of Advisors is currently looking for three positions. One is for the **Capital Improvements Chairman**. The specific duties include oversight of the Capital Improvements Fund raising and project efforts. This is a BOA voting position. The second voting Boa position is a **Member at Large** to help with awards, recognition and the On Line Museum.

The third position is for **Fund Manager for the Special Projects Fund**. This person can live anywhere and is the liaison to the international fraternity helping generate funds to support TKE International and The Teke Education Fund and is not a BOA voting member. If you are or know of someone that is interested in any of these positions, please contact Mark Witthar at mwitthar@ford.com.

Non-BOA Voting Members and Committee Members

- Historian – Ed Propst, DN 276, propst.ed@gmail.com
- Faculty Advisor - Matthew A. Johnson, DN 1230 mjohnso@nwmissouri.edu
- Delta Nu Museum Curator - Rich Reetz, DN 650, rjtr@sbcglobal.net
- Web Portal - Nathan Welch, DN 1386, nathan_welch@hotmail.com
- Delta Nu Review Editor- **Open**
- Communications “Fun Facts”- Dennis Cox, DN 659, dennisc@northwestmissouri.com
- Communications Frater Profile - Mark Rinker, DN 895, mark_rinker@hotmail.com
- Philanthropic-Pete Greve Fund - Bruce Barlow, DN 533, bbarlow88@comcast.net
- Philanthropic-Asst Prog Mgr –Dick Westbrook, DN 547, westbrookrichard@msn.com
- Philanthropic-Special Projects Fund-
- Philanthropic-Scholarship TKE - Dave Teeter, DN 901, dteeter@mc-wildcats.org
- Social Events- Des Moines - **Open**
- Social Events-Kansas City - **Open**
- Social Events-Omaha – **Open**
- Social Events- Scott Keilbey, DN 666, skeilbey@tnemec.com
- Social Events-Arrowhead - Tony Dorrel, DN 920, anthony_dorrel@fedex.com
- Social Events- Golf - Brent Steffens, DN 1384, mrbrentsteffens@hotmail.com
- Social Events-Bowling KC - Max Knudsen, DN 779, mknudsen@larsondoors.com
- Capital Improvement Fund - Doug Johnson, DN 295, AICDJoh@aol.com
- Capital Improvement Fund - Joe Saubers, DN 930, jsaubers@yahoo.com

Housing Committee and Special Projects Members

Property – Special Projects – Bill Ingels, DN 508, bingels@cebridge.net

Property - Support – Randy Kropf, DN 884, randy.kropf@lacledegroupp.com

Property - Workweek Team - Ed Hansen, DN 619, ed.hansen@o-mschools.org

Brian Lohafer, DN 564, blohafer@usd458.org

Craig Poldberg, DN 761, cpoldberg@msn.com

Composite Project – Bob Nielsen, DN 640, nielsenbd1@yahoo.com

If you want to lend assistance to any of these committees, contact the Frater who is designated as the leader of this endeavor. Likewise, if you have some input or see an unfilled need we need to hear from you.

If one of these activities in need of financial support is of special interest to you, feel free to donate. By designating your donation, your contribution will be set aside to help defray the cost of that activity or financial goal. This contribution is voluntary and in no way affects your status with the Alumni Association or the International Fraternity.

Alumni Profile – Donald Beeson, Scroll 78

Frater Donald D. Beeson was born in Shenandoah, Iowa in 1934, and graduated high school there in May of 1952. After his service in the Korean War, (USAF) he then attended NWMSC, graduating in 1959 with a BS degree in Accounting and Economics.

This period of time for TKE and fraternity life was dynamic, with TKE being located in the Quads where all fraternities lived in close quarters. During this time period TKE was first to introduce the Rah-Rah jacket, first to don formal wear (white dinner jackets) for composite photos, and added the Alphas as our 'sister' sorority. Volunteerism was underway and directed to charities including Noyes Children's Home in St. Joseph.

In the late 50s, there was a number of returning TKE military servicemen with wives. One couple, Paul and Carla White, hosted 'Bull Sessions' where much of the planning for TKE projects took place over pizzas and chili. TKE welcoming servicemen introduced a level of maturity and a can-do attitude that propelled Delta Nu forward in big ways. It was one such session in 1958 that was the genesis for TKE being the first fraternity to move off campus into their own house at 222 West Cooper. Don was the signor for that purchase, but he is quick to site the efforts of Dale Cooper (first House Manager) as instrumental in taking a residence to fraternity home.

TKE was out front – setting the pace.

Don lived off campus after his first year and found himself above the pool hall in Maryville which may have sharpened his game, but challenged his GPA at times. The Palms was close by as well, and many TKE dances were held at the Elks Club as they were not possible on campus. Theme parties were the norm, and Don's job as PLAYBOY campus rep 'made possible lots of party decorations'.

After his Maryville years, Don worked for Principal Financial Group in Insurance and Financial Product sales, specializing in Estate and Financial Planning. He earned an MFS from American College in Bryn Mar, PA as well



Pizza Party - April 1957. Ken Gadrical, Vivian Head, Bob Owens, Sue Wright, Don Beeson

as his CLU-ChFC designations. He served on the Northwest Foundation where he was President for a total of six years in three separate terms from 1986 to 1998, and was also a board member of the West Des Moines Historical Society. Don has also been awarded a ‘Hall of Fame’ designation by the Principal Financial Group, as well as a ‘Lifetime Achievement’ award. NWMSU has given Don a ‘Distinguished Alumni Award’ as well as the ‘Turret Award’ for his contributions.



Don married his wife Ann in 1980 and they raised five children, including Don’s daughter and two sons. Don’s daughter Kimberley is a retired US Navy Lt. Cmdr. His son Scott is a US Coast Guard Captain, overseeing the Gulf Oil Spill cleanup. His youngest, D. Erich was Delta Nu TKE Prytanis from 1988 to 1989 and works for Royal Oaks Hospital in Windsor, MO. Don and Ann are currently retired in West Des Moines, Iowa and he enjoys studying history of the Civil War era and traveling. Ann is a retired banking executive.

In summary – Don stated “... from 1956 through the years, he has watched Delta Nu benefit from the talents and personalities of hundreds of fraters who brought uniqueness to the brotherhood – that believe in ‘fraternity for life’.”

Check out the other Frater Profiles on the NWTKE.com web site. To submit a Frater Profile or to nominate someone for a Frater Profile, contact Mark Rinker at the email listed below. This is the list of Frater profiles we have completed to date.

- Gary Magill, 270**
- Reid Anderson, 8**
- Dr. JD Hammond, 21**
- Rod Burrell, 187**
- Benny Johnson, 104**
- Orlo Schroyer, 281**
- Phil Burmeister, 315**
- Ron Gayler, 317**
- Chuck Riley, 351**
- Hal Martens, 735**
- Steve Brightwell, 775**
- Todd Schuler, 871**

Y.I.T.B., Mark Rinker, DN 895, mark_rinker@hotmail.com

On behalf of the Board of Advisors and the Delta Nu Alumni Association, we hoped you enjoyed this edition of the Delta Nu Review and we hope to hear from you and see you at one of the great upcoming events! . The Full Delta Nu Review is produced 2 times a year, spring and fall and e reviews are produced monthly. If you are not receiving these monthly emails, please contact us at brad.shelton@nwtke.com with a valid email address and I will update the record.

Yours in the Bond, Acting Editor Delta Nu Review - Brad Shelton, 651